

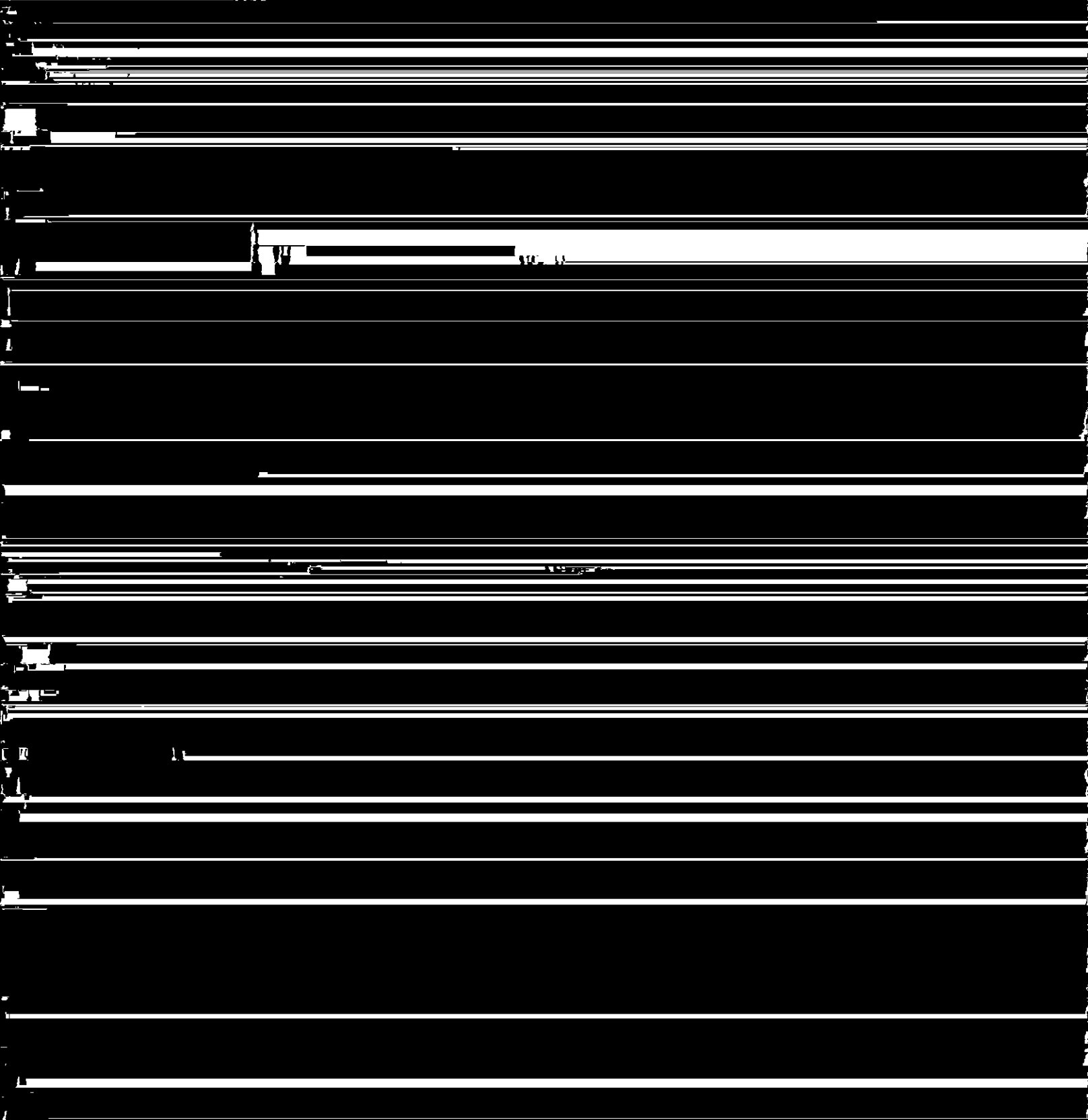
HEARING IN PRIMATE MAMMALS. III

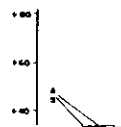
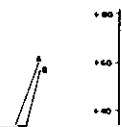
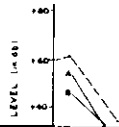
51

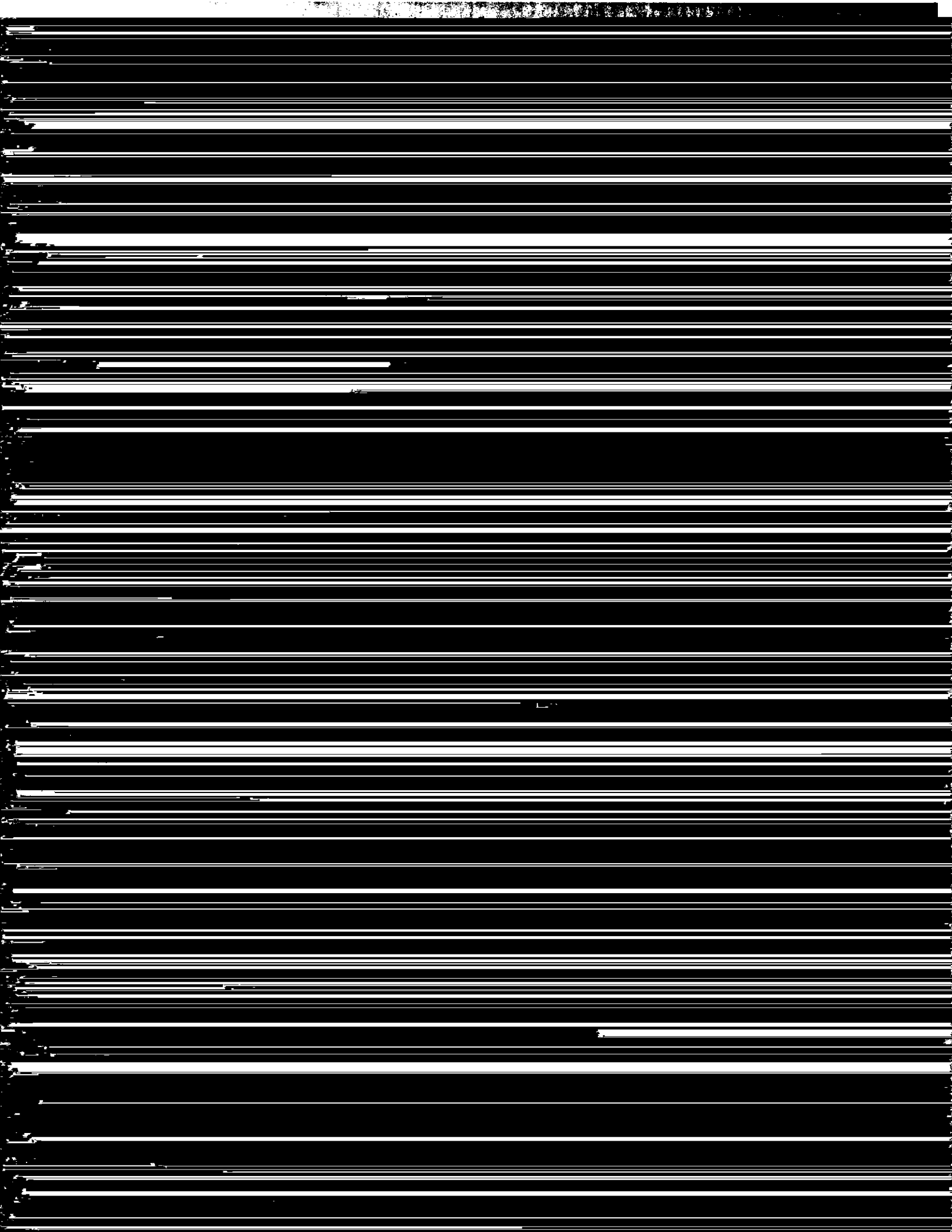
52

53

*Apparatus and procedure*

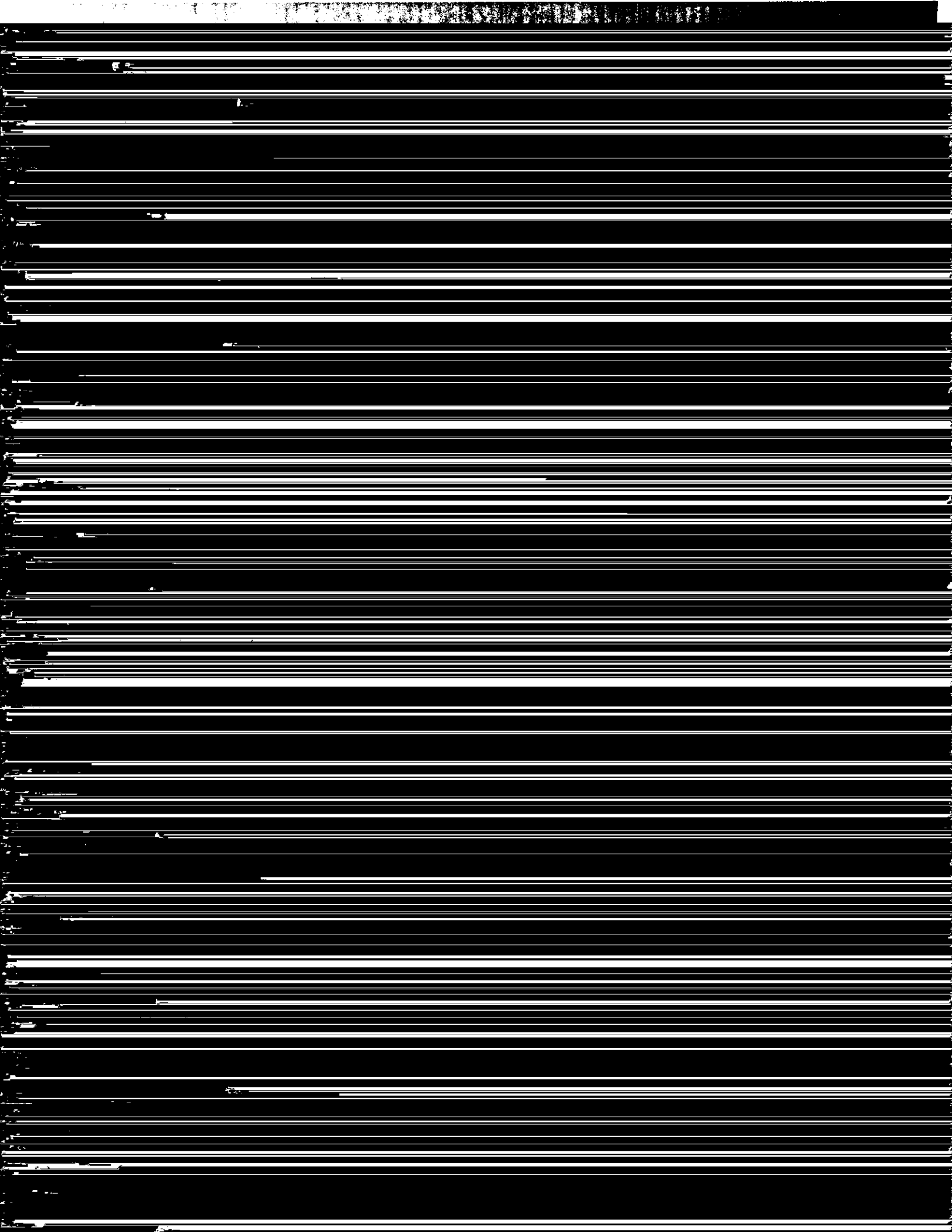






*Overall sensitivity*

The sensitivity of the tree shrew is greater than opossum at every high frequency except the highest one tested (60 kc/s) (cf. Ravizza et al., 1968a). The tree shrew is also more sensitive than hedgehog at seven of the nine frequencies tested. Only at 4 and 8 kc/s are the thresholds of hedgehog lower than the thresholds of tree shrew (cf. Ravizza et al.



19 OSMAN-HILL, W.C. *Primates*, Vol. I, University Press, Edinburgh, 1967