

SUGGESTED CITATION

*Institutional Data Report*, Institutional  
Research: The University of Toledo,  
2007.

# **Institutional Data Report**

## **Fall 2007**



**Lloyd Jacobs**  
President

**Rosemary Haggett**

# Table of Contents

## I. Admissions

A. Fall application tally

B. Fall ethnicity tally

C. Fall 2007 new direct from high school funnel, by territory & state

## II. Enrollment

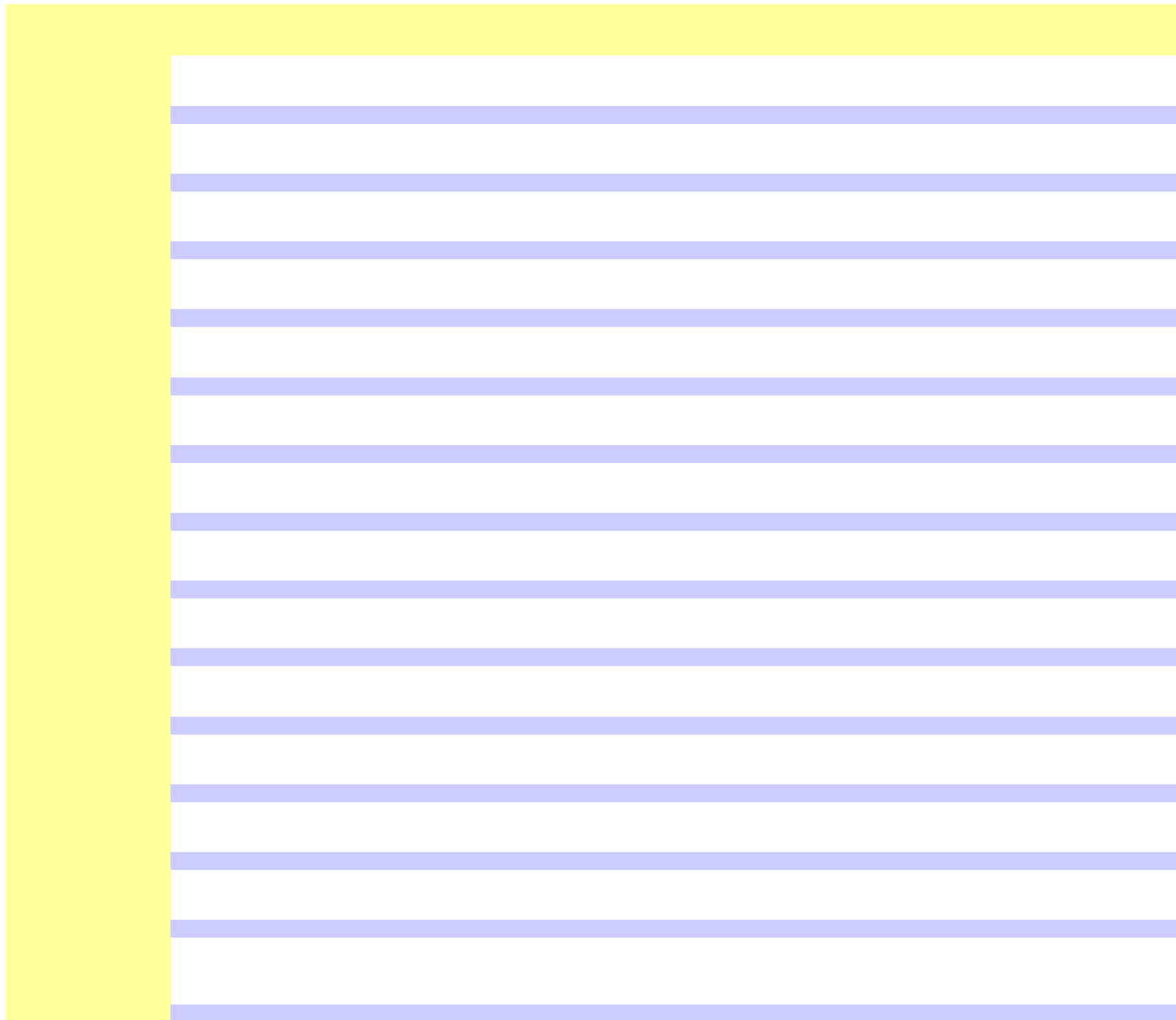
A. Headcount enrollment by campus

B. Main campus headcount enrollment chart

# **Admissions**









**The University of Toledo**  
**Fall Application Tally, Out-of-State**

		Cumulative Inquired			Cumulative Applied			Cumulative Admitted			Cumulative Withdrawn Included in Admits			Cumulative Not Eligible for Admission		
		2006	2007	% Diff	2006	2007	% Diff	2006	2007	% Diff	2006	2007	% Diff	2006	2007	% Diff
Engineering, All Programs	DHS Freshman	440	675	53%	60	190	217%	35	104	197%	20	48	140%	12	33	175%
	Adult Freshman	38	23	-39%	5	5	0%	4	2	-50%	-	-	0%	-	-	0%
	Transfer	33	33	0%	21	25	19%	13	15	15%	-	1	0%	-	-	0%
	International Freshman	94	58	-38%	24	29	21%	14	21	50%	3	1	-67%	-	-	0%
	International Adult	-	-	0%	57	49	-14%	30	37	23%	1	2	100%	-	-	0%
	International Transfer	-	-	0%	130	73	-44%	84	51	-39%	2	1	-50%	4	4	0%
	<b>Total</b>	<b>605</b>	<b>789</b>	<b>30%</b>	<b>297</b>	<b>371</b>	<b>25%</b>	<b>180</b>	<b>230</b>	<b>28%</b>	<b>26</b>	<b>53</b>	<b>104%</b>	<b>16</b>	<b>37</b>	<b>131%</b>
Health Science & Human Service*	DHS Freshman	485	411	-15%	81	158	95%	43	76	77%	13	30	131%	25	44	76%
	Adult Freshman	67	56	-16%	3	1	-67%	2	1	-50%	-	-	0%	-	-	0%
	Transfer	136	76	-44%	47	46	-2%	36	30	-17%	1	-	-100%	-	-	0%
	International Freshman	35	15	-57%	4	2	-50%	1	-	-100%	-	-	0%	-	-	0%
	International Adult	-	-	0%	4	3	-25%	1	4	300%	-	-	0%	-	-	0%
	International Transfer	-	-	0%	19	26	37%	16	17	6%	1	-	-100%	-	1	0%
	<b>Total</b>	<b>723</b>	<b>558</b>	<b>-23%</b>	<b>158</b>	<b>236</b>	<b>49%</b>	<b>99</b>	<b>128</b>	<b>29%</b>	<b>15</b>	<b>30</b>	<b>100%</b>	<b>25</b>	<b>45</b>	<b>80%</b>
Nursing*	DHS Freshman	-	212		-	114		-	46		-	16		-	29	
	Adult Freshman	-	22		-	3		-	1		-	-	0%	-	-	0%
	Transfer	-	74		-	28		-	19		-	1		-	-	0%
	International Freshman	-	11		-	1		-	1		-	-	0%	-	-	0%
	International Adult	-	-	0%	-	4		-	2		-	-	0%	-	-	0%
	International Transfer	-	-	0%	-	7		-	3		-	-	0%	-	-	0%
	<b>Total</b>	<b>-</b>	<b>319</b>		<b>-</b>	<b>157</b>		<b>-</b>	<b>72</b>		<b>-</b>	<b>17</b>		<b>-</b>	<b>29</b>	
Pharmacy	DHS Freshman	157	192	22%	78	116	49%	75	106	41%	27	52	93%	1	7	600%
	Adult Freshman	7	8	14%	-	1		-	1		-	-	0%	-	-	0%
	Transfer	151	114	-25%	98	86	-12%	49	49	0%	3	11	267%	-	-	0%
	International Freshman	27	29	7%	11	16	45%	10	15	50%	1	-	-100%	-	-	0%
	International Adult	-	-	0%	4	6	50%	2	7	250%	-	-	0%	-	-	0%
	International Transfer	-	-	0%	25	38	52%	9	21	133%	1	1	0%	2	1	-50%
	<b>Total</b>	<b>342</b>	<b>343</b>	<b>0%</b>	<b>216</b>	<b>263</b>	<b>22%</b>	<b>145</b>	<b>199</b>	<b>37%</b>	<b>32</b>	<b>64</b>	<b>100%</b>	<b>3</b>	<b>8</b>	<b>167%</b>
Student Success Center	DHS Freshman	863	1,519	76%	34	95	179%	35	70	100%	5	12	140%	8	28	250%
	Adult Freshman	103	128	24%	7	4	-43%	8	5	-38%	-	-	0%	-	-	0%
	Transfer	165	188	14%	8	13	63%	28	26	-7%	-	1	0%	-	-	0%
	International Freshman	614	554	-10%	2	1	-50%	6	1	-83%	1	-	-100%	-	-	0%
	International Adult	-	-	0%	2	2	0%	-	-	0%	-	-	0%	-	-	0%
	International Transfer	-	-	0%	7	5	-29%	7	6	-14%	-	-	0%	-	-	0%
	<b>Total</b>	<b>1,745</b>	<b>2,389</b>	<b>37%</b>	<b>60</b>	<b>120</b>	<b>100%</b>	<b>84</b>	<b>108</b>	<b>29%</b>	<b>6</b>	<b>13</b>	<b>117%</b>	<b>8</b>	<b>28</b>	<b>250%</b>
University College	DHS Freshman	204	211	3%	18	28	56%	10	14	40%	4	4	0%	6	4	-33%
	Adult Freshman	80	64	-20%	2	2	0%	-	3		-	1	0%	-	-	0%
	Transfer	22	26	18%	7	19	171%	25	20	-20%	-	1	0%	-	-	0%
	International Freshman	50	29	-42%	-	2		2	1	-50%	-	-	0%	-	-	0%
	International Adult	-	-	0%	1	1	0%	-	-	0%	-	-	0%	-	-	0%
	International Transfer	-	-	0%	4	2	-50%	3	1	-67%	-	-	0%	-	-	0%
	<b>Total</b>	<b>356</b>	<b>330</b>	<b>-7%</b>	<b>32</b>	<b>54</b>	<b>69%</b>	<b>40</b>	<b>39</b>	<b>-3%</b>	<b>4</b>	<b>6</b>	<b>50%</b>	<b>-</b>	<b>4</b>	
Out-Of-State Total	High School Concurrent	-	-	0%	-	1		-	1		-	-	0%	-	-	0%
	DHS Freshman	4,072	5,902	45%	532	1,325	149%	373	765	105%	111	267	141%	111	270	143%
	Adult Freshman	349	381	9%	32	32	0%	27	23	-15%	-	2	0%	1	2	100%
	Transfer	674	678	1%	260	290	12%	213	210	-1%	11	20	82%	-	-	0%
	International Freshman	985	797	-19%	75	101	35%	52	74	42%	8	3	-63%	1	-	-100%
	International Adult	-	-	0%	130	104	-20%	81	75	-7%	2	2	0%	-	2	0%
	International Transfer	-	-	0%	249	224	-10%	166	151	-9%	5	4	-20%	8	8	0%
<b>Total</b>	<b>6,080</b>	<b>7,758</b>	<b>28%</b>	<b>1,278</b>	<b>2,077</b>	<b>63%</b>	<b>912</b>	<b>1,299</b>	<b>42%</b>	<b>137</b>	<b>298</b>	<b>118%</b>	<b>121</b>	<b>282</b>	<b>133%</b>	

\*Prior to Fall 2007, undergraduate Nursing was included in the College of Health & Human Services. Only summary data are available. Therefore, Nursing cannot be disaggregated to provide appropriate comparisons prior to Fall 2007. Health Science & Human Service changes can be estimated by adding Nursing to Health Science & Human Service totals.

Fall 2007 data are as of 08/30/2007 and Fall 2006 data are as of 08/31/2006.



## The University of Toledo Fall Ethnicity Tally, University Total

### African-American Students

	Cumulative Inquired			Cumulative Applied			Cumulative Admitted			Cumulative Registered			Inq to App Conversion		App to Admit Admit Rate		Admit to Reg Yield	
	2006	2007	% Diff	2006	2007	% Diff	2006	2007	% Diff	2006	2007	% Diff	2006	2007	2006	2007	2006	2007
DHS Freshman	4,858	6,201	28%	1,590	2,247	41%	1,376	1,769	29%	484	572	18%	33%	36%	87%	79%	35%	32%
Adult Freshman	274	388	42%	112	156	39%	100	120	20%	67	64	-4%	41%	40%	89%	77%	67%	53%
Transfer	442	525	19%	256	293	14%	207	216	4%	128	115	-10%	58%	56%	81%	74%	62%	53%
<b>TOTAL</b>	<b>5,574</b>	<b>7,114</b>	<b>28%</b>	<b>1,958</b>	<b>2,696</b>	<b>38%</b>	<b>1,683</b>	<b>2,105</b>	<b>25%</b>	<b>679</b>	<b>751</b>	<b>11%</b>	<b>35%</b>	<b>38%</b>	<b>86%</b>	<b>78%</b>	<b>40%</b>	<b>36%</b>

### Hispanic-Latino Students

	Cumulative Inquired			Cumulative Applied			Cumulative Admitted			Cumulative Registered			Inq to App Conversion		App to Admit Admit Rate		Admit to Reg Yield	
	2006	2007	% Diff	2006	2007	% Diff	2006	2007	% Diff	2006	2007	% Diff	2006	2007	2006	2007	2006	2007
DHS Freshman	1,028	1,153	12%	261	311	19%	230	284	23%	111	106	-5%	25%	27%	88%	91%	48%	37%
Adult Freshman	50	92	84%	16	30	88%	12	28	133%	7	16	129%	32%	33%	75%	93%	58%	57%
Transfer	88	95	8%	74	71	-4%	66	57	-14%	40	38	-5%	84%	75%	89%	80%	61%	67%
<b>TOTAL</b>	<b>1,166</b>	<b>1,340</b>	<b>15%</b>	<b>351</b>	<b>412</b>	<b>17%</b>	<b>308</b>	<b>369</b>	<b>20%</b>	<b>158</b>	<b>160</b>	<b>1%</b>	<b>30%</b>	<b>31%</b>	<b>88%</b>	<b>90%</b>	<b>51%</b>	<b>43%</b>

### African-American and Hispanic-Latino Students

Combined Groups	Cumulative Inquired			Cumulative Applied			Cumulative Admitted			Cumulative Registered			Inq to App Conversion		App to Admit Admit Rate		Admit to Reg Yield	
	2006	2007	% Diff	2006	2007	% Diff	2006	2007	% Diff	2006	2007	% Diff	2006	2007	2006	2007	2006	2007
DHS Freshman	5,886	7,354	25%	1,851	2,558	38%	1,606	2,053	28%	595	678	14%	31%	35%	87%	80%	37%	33%
Adult Freshman	324	480	48%	128	186	45%	112	148	32%	74	80	8%	40%	39%	88%	80%	66%	54%
Transfer	530	620	17%	330	364	10%	273	273	0%	168	153	-9%	62%	59%	83%	75%	62%	56%
<b>TOTAL</b>	<b>6,740</b>	<b>8,454</b>	<b>25%</b>	<b>2,309</b>	<b>3,108</b>	<b>35%</b>	<b>1,991</b>	<b>2,474</b>	<b>24%</b>	<b>837</b>	<b>911</b>	<b>9%</b>	<b>34%</b>	<b>37%</b>	<b>86%</b>	<b>80%</b>	<b>42%</b>	<b>37%</b>

Fall 2006 data are as of 8/24/2006 and Fall 2007 data are as of 8/23/2007.

**The University of Toledo**  
**Fall Ethnicity Tally, In-State (Ohio Plus Monroe County, Michigan)**

**In-State African-American Students**

	Cumulative Inquired			Cumulative Applied			Cumulative Admitted			Cumulative Registered			Inq to App Conversion		App to Admit Admit Rate		Admit to Reg Yield	
	2006	2007	% Diff	2006	2007	% Diff	2006	2007	% Diff	2006	2007	% Diff	2006	2007	2006	2007	2006	2007
DHS Freshmen	4,000	4,595	15%	1,412	1,631	16%	1,294	1,536	19%	470	534	14%	35%	35%	92%	94%	36%	35%
Adult Freshmen	246	338	37%	102	143	40%	92	114	24%	62	63	2%	41%	42%	90%	80%	67%	55%
Transfer	343	400	17%	211	230	9%	171	178	4%	112	102	-9%	62%	58%	81%	77%	65%	57%
<b>TOTAL</b>	<b>4,589</b>	<b>5,333</b>	<b>16%</b>	<b>1,725</b>	<b>2,004</b>	<b>16%</b>	<b>1,557</b>	<b>1,828</b>	<b>17%</b>	<b>644</b>	<b>699</b>	<b>9%</b>	<b>38%</b>	<b>38%</b>	<b>90%</b>	<b>91%</b>	<b>41%</b>	<b>38%</b>

**In-State Hispanic-Latino Students**

	Cumulative Inquired			Cumulative Applied			Cumulative Admitted			Cumulative Registered			Inq to App Conversion		App to Admit Admit Rate		Admit to Reg Yield	
	2006	2007	% Diff	2006	2007	% Diff	2006	2007	% Diff	2006	2007	% Diff	2006	2007	2006	2007	2006	2007
DHS Freshmen	880	951	8%	238	264	11%	215	260	21%	106	102	-4%	27%	28%	90%	98%	49%	39%
Adult Freshmen	42	83	98%	16	29	81%	12	27	125%	7	15	114%	38%	35%	75%	93%	58%	56%
Transfer	73	73	0%	63	59	-6%	57	49	-14%	38	33	-13%	86%	81%	90%	83%	67%	67%
<b>TOTAL</b>	<b>995</b>	<b>1,107</b>	<b>11%</b>	<b>317</b>	<b>352</b>	<b>11%</b>	<b>284</b>	<b>336</b>	<b>18%</b>	<b>151</b>	<b>150</b>	<b>-1%</b>	<b>32%</b>	<b>32%</b>	<b>90%</b>	<b>95%</b>	<b>53%</b>	<b>45%</b>

**Total In-State African-American and Hispanic-Latino Students**

Combined Groups	Cumulative Inquired			Cumulative Applied			Cumulative Admitted			Cumulative Registered			Inq to App Conversion		App to Admit Admit Rate		Admit to Reg Yield	
	2006	2007	% Diff	2006	2007	% Diff	2006	2007	% Diff	2006	2007	% Diff	2006	2007	2006	2007	2006	2007
DHS Freshmen	4,880	5,546	14%	1,650	1,895	15%	1,509	1,796	19%	576	636	10%	34%	34%	91%	95%	38%	35%
Adult Freshmen	288	421	46%	118	172	46%	104	141	36%	69	78	13%	41%	41%	88%	82%	66%	55%
Transfer	416	473	14%	274	289	5%	228	227	0%	150	135	-10%	66%	61%	83%	79%	66%	59%
<b>TOTAL</b>	<b>5,584</b>	<b>6,440</b>	<b>15%</b>	<b>2,042</b>	<b>2,356</b>	<b>15%</b>	<b>1,841</b>	<b>2,164</b>	<b>18%</b>	<b>795</b>	<b>849</b>	<b>7%</b>	<b>37%</b>	<b>37%</b>	<b>90%</b>	<b>92%</b>	<b>43%</b>	<b>39%</b>

Fall 2006 data are as of 8/24/2006 and Fall 2007 data are as of 8/23/2007.

## The University of Toledo Fall Ethnicity Tally, Out-of-State

### Out-of-State African-American Students

	Cumulative Inquired			Cumulative Applied			Cumulative Admitted			Cumulative Registered			Inq to App Conversion		App to Admit Admit Rate		Admit to Reg Yield	
	2006	2007	% Diff	2006	2007	% Diff	2006	2007	% Diff	2006	2007	% Diff	2006	2007	2006	2007	2006	2007
DHS Freshmen	858	1,606	87%	178	616	246%	82	233	184%	14	38	171%	21%	38%	46%	38%	17%	16%
Adult Freshmen	28	50	79%	10	13	30%	8	6	-25%	5	1	-80%	36%	26%	80%	46%	63%	17%
Transfer	99	125	26%	45	63	40%	36	38	6%	16	13	-19%	45%	50%	80%	60%	44%	34%
<b>TOTAL</b>	<b>985</b>	<b>1,781</b>	<b>81%</b>	<b>233</b>	<b>692</b>	<b>197%</b>	<b>126</b>	<b>277</b>	<b>120%</b>	<b>35</b>	<b>52</b>	<b>49%</b>	<b>24%</b>	<b>39%</b>	<b>54%</b>	<b>40%</b>	<b>28%</b>	<b>19%</b>

### Out-of-State Hispanic-Latino Students

	Cumulative Inquired			Cumulative Applied			Cumulative Admitted			Cumulative Registered			Inq to App Conversion		App to Admit Admit Rate		Admit to Reg Yield	
	2006	2007	% Diff	2006	2007	% Diff	2006	2007	% Diff	2006	2007	% Diff	2006	2007	2006	2007	2006	2007
DHS Freshmen	148	202	36%	23	47	104%	15	24	60%	5	4	-20%	16%	23%	65%	51%	33%	17%
Adult Freshmen	8	9	13%	0	1	100%	0	1	100%	0	1	100%	0%	11%	100%	100%	0%	100%
Transfer	15	22	47%	11	12	9%	9	8	-11%	2	5	150%	73%	55%	82%	67%	22%	63%
<b>TOTAL</b>	<b>171</b>	<b>233</b>	<b>36%</b>	<b>34</b>	<b>60</b>	<b>76%</b>	<b>24</b>	<b>33</b>	<b>38%</b>	<b>7</b>	<b>10</b>	<b>43%</b>	<b>20%</b>	<b>26%</b>	<b>71%</b>	<b>55%</b>	<b>29%</b>	<b>30%</b>

### Total Out-of-State African-American and Hispanic-Latino Students

Combined Groups	Cumulative Inquired			Cumulative Applied			Cumulative Admitted			Cumulative Registered			Inq to App Conversion		App to Admit Admit Rate		Admit to Reg Yield	
	2006	2007	% Diff	2006	2007	% Diff	2006	2007	% Diff	2006	2007	% Diff	2006	2007	2006	2007	2006	2007
DHS Freshmen	1,006	1,808	80%	201	663	230%	97	257	165%	19	42	121%	20%	37%	48%	39%	20%	16%
Adult Freshmen	36	59	64%	10	14	40%	8	7	-13%	5	2	-60%	28%	24%	80%	50%	63%	29%
Transfer	114	147	29%	56	75	34%	45	46	2%	18	18	0%	49%	51%	80%	61%	40%	39%
<b>TOTAL</b>	<b>1,156</b>	<b>2,014</b>	<b>74%</b>	<b>267</b>	<b>752</b>	<b>182%</b>	<b>150</b>	<b>310</b>	<b>107%</b>	<b>42</b>	<b>62</b>	<b>48%</b>	<b>23%</b>	<b>37%</b>	<b>56%</b>	<b>41%</b>	<b>28%</b>	<b>20%</b>

Fall 2006 data are as of 8/24/2006 and Fall 2007 data are as of 8/23/2007.









# **Enrollment**



## The University of Toledo

### Fall 2007 Headcount Enrollment by Campus

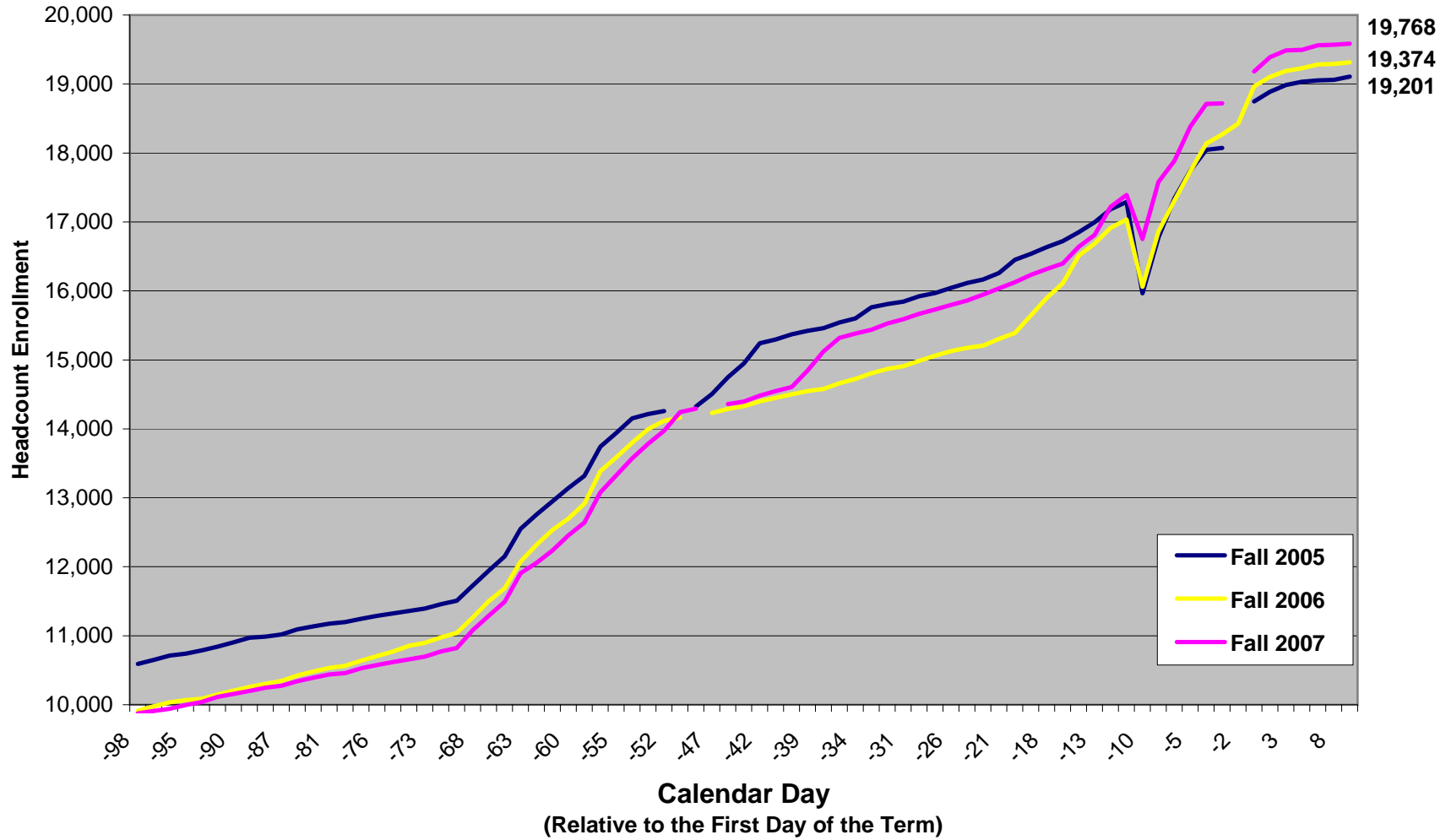
#### Data as of September 3, 2007

<u>Campus</u>	<b>Headcount Enrollment</b>			
	<u>2007</u>	<u>2006</u>	<u>Diff</u>	<u>% Diff</u>
Main Campus	19,768	19,374	394	2.0%
Health Science Campus	<u>1,351</u>	<u>1,339</u>	<u>12</u>	<u>0.9%</u>
<b>Total</b>	<b>21,119</b>	<b>20,713</b>	<b>406</b>	<b>2.0%</b>

---

**Source:** Institutional Analysis System and Health Science Campus Registrar.

**The University of Toledo**  
**Main Campus Total Headcount Enrollment: Fall 2005-07**  
**Data as of September 3, 2007**



## The University of Toledo Main Campus

### Fall 2007 Headcount Enrollment by Primary Program Level and College Data as of September 3, 2007

<u>Student College</u>	<b>Undergraduate</b>				<b>Graduate</b>				<b>Total</b>			
	<u>9/3/07</u>	<u>9/4/06</u>	<u>Diff</u>	<u>% Diff</u>	<u>9/3/07</u>	<u>9/4/06</u>	<u>Diff</u>	<u>% Diff</u>	<u>9/3/07</u>	<u>9/4/06</u>	<u>Diff</u>	<u>% Diff</u>
Arts & Sciences	2,978	2,968	10	0.3%	584	587	-3	-0.5%	3,562	3,555	7	0.2%
Business	2,911	2,912	-1	0.0%	397	395	2	0.5%	3,308	3,307	1	0.0%
Education	1,407	1,487	-80	-5.4%	739	820	-81	-9.9%	2,146	2,307	-161	-7.0%
Engineering	2,384	2,338	46	2.0%	305	301	4	1.3%	2,689	2,639	50	1.9%
Health Science & Human Service	1,909	1,805	104	5.8%	424	419	5	1.2%	2,333	2,224	109	4.9%
Law	0	0	0	n/a	545	532	13	2.4%	545	532	13	2.4%
Nursing	1,175	940	235	25.0%	0	0	0	n/a	1,175	940	235	25.0%
Pharmacy	1,264	1,185	79	6.7%	245	248	-3	-1.2%	1,509	1,433	76	5.3%
University College	2,490	2,426	64	2.6%	0	0	0	n/a	2,490	2,426	64	2.6%
Student Success Center	1,517	1,366	151	11.1%	0	0	0	n/a	1,517	1,366	151	11.1%
Concurrent College	9	6	3	50.0%	2	5	-3	-60.0%	11	11	0	0.0%
<b>Total</b>	<b>16,527</b>	<b>16,067</b>	<b>460</b>	<b>2.9%</b>	<b>3,241</b>	<b>3,307</b>	<b>-66</b>	<b>-2.0%</b>	<b>19,768</b>	<b>19,374</b>	<b>394</b>	<b>2.0%</b>

**Notes:** 1. This report includes all course types including Contract and Flexibly Scheduled courses.

2. Contract and Flexibly Scheduled enrollments are not final until the end of the term.

3. Concurrent College is included in the headcount report as of January 13, 2005.

4. Undergraduate Nursing enrollments for Fall 2007 and Fall 2006 are included in the College of Nursing.

5. Graduate Nursing, Occupational Therapy, Physical Therapy, and Physician Assistant Studies students are enrolled through the Health Science Campus and are not reflected in this report.

6. The Student Success Center subtotal is included in the University College total.

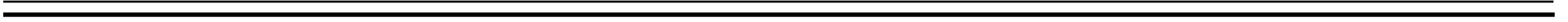
7. Business Technology enrollments for Fall 2007 and Fall 2006 are included in the College of Business.

**Selection Criteria:** Students enrolled for at least 1 attempted credit hour.

**Source:** Institutional Analysis System.









---





---

---

---





---

---

[Redacted]

[Redacted]

[Redacted]





---


---

---







---

[Redacted]

[Redacted]

[Redacted]

[Redacted]

---

3/4" K&#.

-&."/" (MM) Tj -7840 -264(63) Tj 720



---

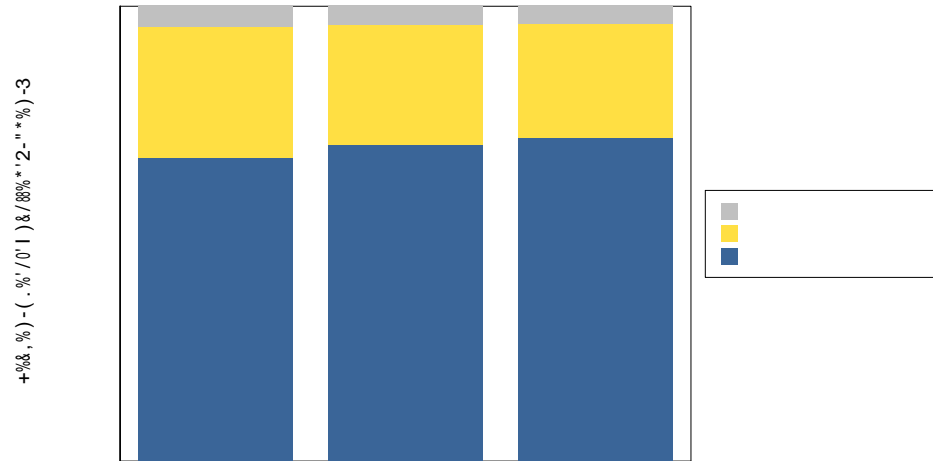




! " # \$ % & ' ( ) \* + % & , % ) - ( . % ' / 0 ' 1 & ( \* " ( - % ' 2 - " \* % ) - 3 ' \$ 4 ' 2 - ( - % ' 5 % 3 6 \* % ) , 4  
 7 ( 8 8 ' 9 : : ; ; ' < ' 9 : : =

	7 ( 8 8 ' 9 : : =		7 ( 8 8 ' 9 : : >		7 ( 8 8 ' 9 : : ;	
5 % 3 6 * % ) - ! / ) & % 3 6 * % ) - ? 6 , @ 6 . ( ) ' 5 % , 6 A & / , 6 - 4 B / - ( 8	C D 9 E :	F : : 6 : H	C D C : =	F : : 6 : H	C D F E C	F : : 6 : H

+ % & , % ) - ( . % ' / 0 ' 1 & ( \* " ( - % ' 2 - " \* % ) - 3 ' \$ 4 ' 2 - ( - % ' 5 % 3 6 \* % ) , 4





# Headcount by Level and County of Employment

Level	County	Headcount	Total
9))	"	636	3:
9#/)	(";	<<	:
9#/\$(&)	(	>?	>
9\$/	"#	3	<
9&@	(%A,	334	:
B, )C'	"\$	7	6
B-' D"		<	4
B&\$), -		::	36
E(--')	)	3<	6
E/(CF(%	"	33	<
E)(-G		?H	7
E), -C'	"\$	68	8
E)%'\$ "		7	3
E' )&C=%("	(	3>	<
E' #/' . \$' "		8	4
E-(DI' -;		8:	>
E&J(/' @	(	3K?>8	:H
1 (-G,		>4	7
1, 1%( " . ,		344	

## Headcount by Level and County of Residence

	Number	Percentage	Total
T (/ ' " % ' @	3 >	3 >	
T (- % "	7 ?	?	
T , ; % ' (	6 >	3 H	
T , % @ #	4	3	
T , - , -	368	:	
T % ( C %	73	8	
T ' " - ' ,	3	4	
T ' " \$ @ ' C , - J	67 <	6 ?	
T ' -- ' D	67	6	
T & # G % ' @ & C	34	3	
Z ' = ) ,	3	3	
[ \$ \$ ( D (	663	68	
U (& ) ; % ' @	6 <	34	
U , -- J	3	3	
U % G ( D ( J	3 :	<	
U % G ,	3	4	
U ' - \$ ( @ ,	> 8	8	
U - , = ) ,	8	4	
U & \$ " ( C	3 ? ?	3 ?	
+ % / ) ( " ;	33 <	3 <	
+ ' # #	<	4	
V ( " ; & # G J	6 <	6 H	
V . % \$ '	7	4	
V , " , . (	3 <	3 ?	
V / , ) = J	88	>	
V \$ ( - G	6 ? >	66	
V & C C %	<	3 H	
\ - & C = & ) )	3 <	3 H	
\ & # . ( - ( D ( #	6 :	>	
] " % "	3 :	3	
^ ( " * _ , - \$	::	7	
_ ( -- , "	? 4	3	
_ ( # / % ' @ \$ ' "	:	6	
_ ( J " ,	? <	34	
_ ) % ( C #	366	63	
_ ' ' ;	? 84	38 :	
_ J ( " ; ' \$	<	6	
S , " ( D , , * T !	7 H	6 >	
T ' " - ' , * T !	H 78	37 :	
[ & \$ " ' I ' V \$ ( \$ ,	77 >	< 68	
! " \$ , - " ( \$ % " ( )	74 :	? > :	
] " G " ' D "	4	8	
[ \$ / , - #	H 3	334	
<b>Number by County</b>			

! " # \$ % & ' ( ) \* ' + % & , % ) - ( . % ' / 0 ' 1 ) \* % & . & ( \* " ( - % 2 ' \$ 3 ' 4 ( # 5 " 2 ' 6 % 2 7 \* % ) , 3  
8 ( 9 9 ' : ; ; < ' = ' : ; ; >

	8(99':;;>		8(99':;;?		8(99':;;<	
@)'4(#5"2	9:;<=	69>9?	9:<3;	63>@?	9:<==	66>6?
@00'4(#5"2	36:==8	8=>8?	36:<7@	8;>3?	36:7@6	88;>?
A/- (9	B?0<:D	B; ;E; F	B?0; ?>	B; ;E; F	B?0; <G	B; ;E; F





r r u u C r



Co u r

Cour Co

u Co

o

r

u



u o



r

u r

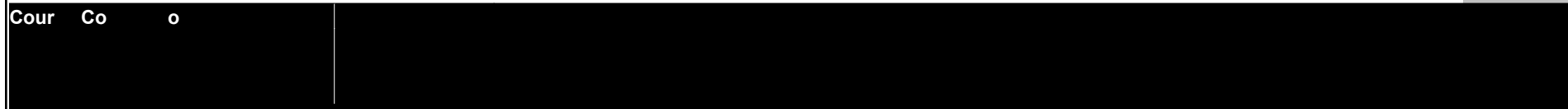


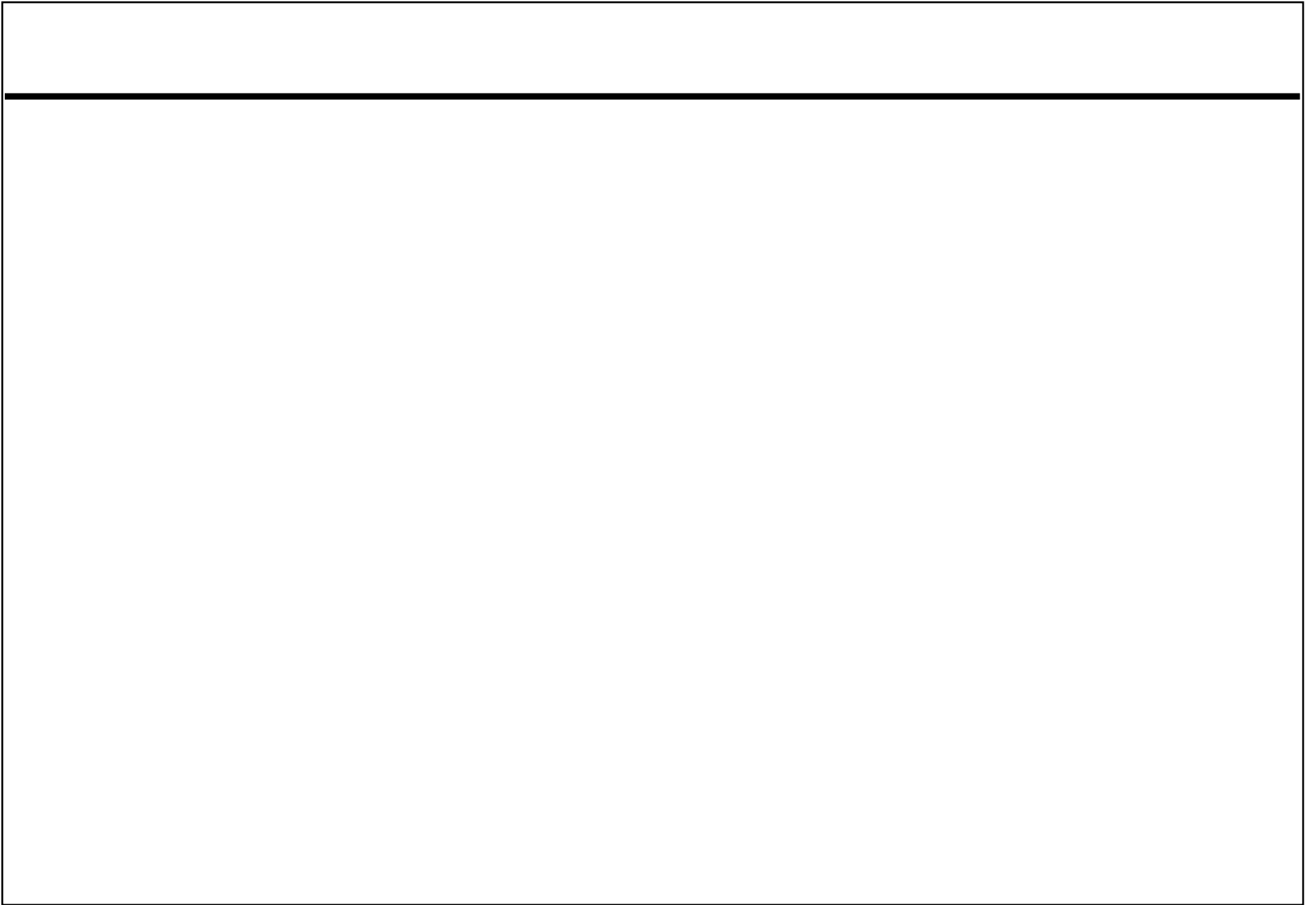
ur

r

r Co

Cour Co o





# **New Students**

## **Fall 2007 New Students Highlights of the Incoming Undergraduate Class**

### **Highlights Include the Following Students: New DHS, New Adult, New Transfer, and New International**

- Ø Since Fall 2005, the University of Toledo's new undergraduate student population has become more ethnically diverse. The percentages of Black and Hispanic students have increased from 15.1% to 15.7% and from 2.8% to 3.1%, respectively.
- Ø The top five majors with the most new undergraduate student enrollments for Fall 2007 are Undecided, Pre-Pharmacy, Pre-Business, Nursing, and Exercise Science.
  - While Undecided is the top major, the percent of new students with Undecided as a major has dropped from 12.7 in Fall 2005 to 12.1 in Fall 2007.
- Ø The average high school grade point average of all incoming new undergraduate students for Fall 2007 is 3.09, which is up from 3.07 in 2005.
- Ø The University of Toledo has attracted 696 out-of-state new undergraduate students this fall, which is an increase of 98 students over the last fall term.
- Ø Other than Ohio and Michigan, the top three states from which Fall 2007 new undergraduate students came are Pennsylvania, Indiana, and Illinois.
- Ø The top five Ohio counties from which the Fall 2007 incoming class came are Lucas County, followed by the counties of Cuyahoga, Wood, Lorain, and Franklin.
- Ø The top five countries from which Fall 2007 new international undergraduate students came are Saudi Arabia, China, Canada, South Korea, and India.

## **New Students (Combined)**

Includes: All new undergraduate students enrolled at the University of Toledo.

**Table 1.1**  
**New Students (Combined)**  
**Applied, Admitted & Enrolled**  
**Fall 2007**

<b>College</b>	<b>Applied</b>	<b>Admitted</b>	<b>Enrolled</b>	<b>Enrolled Yield</b>
Arts & Sciences	2,849	2,510	965	38%
Business	1,705	1,454	700	48%
Concurrent	n/a	n/a	7	n/a
Education	834	737	334	45%
Engineering	1,903	1,556	666	43%
Health & Human Services	1,538	1,205	532	44%
Nursing	1,182	969	437	45%
Pharmacy	1,156	1,067	521	49%
University College	410	644	223	35%
Student Success Center	1,466	1,545	708	46%
<b>Total</b>	<b>13,043</b>	<b>11,687</b>	<b>5,093</b>	<b>44%</b>

**Source:** Fall 2007 Final Fall Application Tally & Institutional Analysis System (IAS), 2007.

**Notes:** Students may apply to one college, but might be admitted to another.

**Table and Figure 1.2**

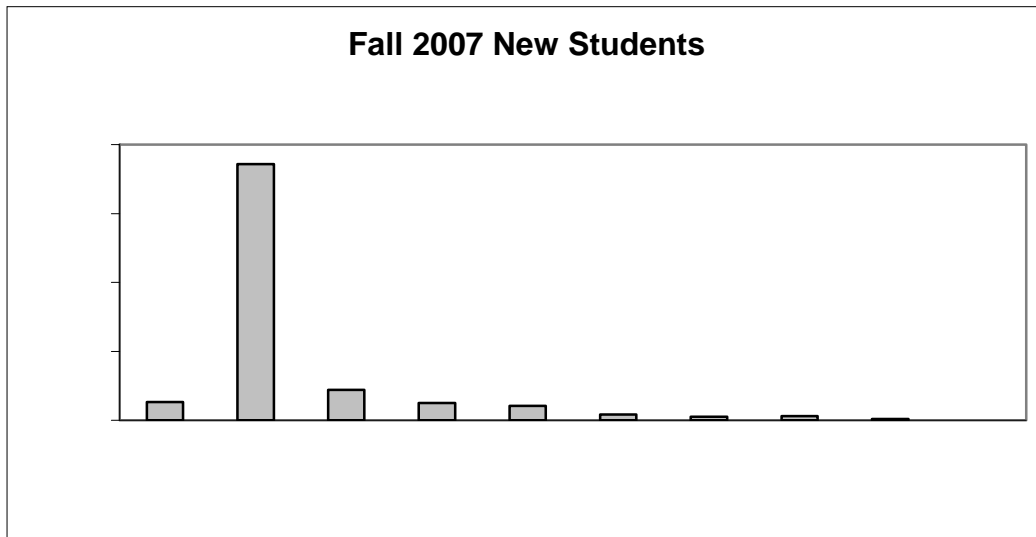
<b>Gender</b>	<b>Ethnicity</b>	<b>2007</b>	<b>2006</b>	<b>2005</b>	<b>2007</b>	<b>2006</b>	<b>2005</b>
<i>Female</i>	American Indian/Alaskan Native	8	8	6	0.2%	0.2%	0.1%
	Asian or Pacific Islander	57	50	52	1.1%	1.1%	1.2%
	Black, not of Hispanic Origin	452	349	324	8.9%	7.6%	7.5%
	Non-resident Alien	38	36	24	0.7%	0.8%	0.6%
	Not Specified	126	124	106	2.5%	2.7%	2.5%
	Other Hispanic Americans	77	65	59	1.5%	1.4%	1.4%
	White, not of Hispanic origin	1,761	1,546	1,471	34.6%	33.8%	34.1%
		<b>2,519</b>	<b>2,178</b>	<b>2,042</b>	<b>49.5%</b>	<b>47.6%</b>	<b>47.4%</b>
<i>Male</i>	American Indian/Alaskan Native	7	6	3	0.1%	0.1%	0.1%
	Asian or Pacific Islander	50	45	43	1.0%	1.0%	1.0%
	Black, not of Hispanic Origin	348	336	326	6.8%	7.3%	7.6%
	Non-resident Alien	110	80	40	2.2%	1.7%	0.9%
	Not Specified	143	144	128	2.8%	3.1%	3.0%
	Other Hispanic Americans	83	70	61	1.6%	1.5%	1.4%
	White, not of Hispanic origin	1,833	1,713	1,668	36.0%	37.5%	38.7%



**Table and Figure 1.3  
New Students (Combined)  
Enrollment by Age Group  
Fall 2005-07**

Age Group	Count			Percent of Total		
	2007	2006	2005	2007	2006	2005
17 and younger	266	201	155	5.2%	4.4%	3.6%
18 - 19	3,715	3,285	3,237	72.9%	71.9%	75.1%
20 - 21	441	443	360	8.7%	9.7%	8.4%
22 - 24	249	268	251	4.9%	5.9%	5.8%
25 - 29	207	177	145	4.1%	3.9%	3.4%
30 - 34	82	66	63	1.6%	1.4%	1.5%
35 - 39	53	49	32	1.0%	1.1%	0.7%
40 - 49	61	52	49	1.2%	1.1%	1.1%
50 - 64	19	29	18	0.4%	0.6%	0.4%
65 and older	0	2	1	0.0%	0.0%	0.0%
<b>Grand Total</b>	<b>5,093</b>	<b>4,572</b>	<b>4,311</b>	<b>100.0%</b>	<b>100.0%</b>	<b>100.0%</b>

Source: Institutional Analysis System (IAS): 2007.



**Table and Figure 1.4**

<b>College</b>	<b>2007</b>	<b>2006</b>	<b>2005</b>	<b>2007</b>	<b>2006</b>	<b>2005</b>
Arts & Sciences	965	865	848	18.9%	18.9%	19.7%
Student Success Center	708	581	546	13.9%	12.7%	12.7%
Business	700	578	558	13.7%	12.6%	12.9%
Engineering	666	643	598	13.1%	14.1%	13.9%
Health & Human Services	532	727	656	10.4%	15.9%	15.2%
Pharmacy	521	469	491	10.2%	10.3%	11.4%
Nursing	437	21	n/a	8.6%	0.5%	n/a
Education	334	320	314	6.6%	7.0%	7.3%
University College	223	364	297	4.4%	8.0%	6.9%
Concurrent College	7	4	3	0.1%	0.1%	0.1%

**Table 1.5**

<b>College</b>	<b>Ethnicity</b>	<b>2007</b>	<b>2006</b>	<b>2005</b>	<b>2007</b>	<b>2006</b>	<b>2005</b>
A							

College	Ethnicity	2007	2006	2005	2007	2006	2005
Nursing	American Indian/Alaskan Native	1	0	n/a	0.0%	0.0%	n/a
	Asian or Pacific Islander	8	0	n/a	0.2%	0.0%	n/a
	Black, not of Hispanic Origin	85	4	n/a	1.7%	0.1%	n/a
	Non-resident Alien	3	0	n/a	0.1%	0.0%	n/a
	Not Specified	17	2	n/a	0.3%	0.0%	n/a
	Other Hispanic Americans	13	0	n/a	0.3%	0.0%	n/a
	White, not of Hispanic origin	310	15	n/a	6.1%	0.3%	n/a
		<b>437</b>	<b>21</b>	<b>n/a</b>	<b>8.6%</b>	<b>0.5%</b>	<b>n/a</b>
Pharmacy	American Indian/Alaskan Native	2	2	1	0.0%	0.0%	0.0%
	Asian or Pacific Islander	30	31	35	0.6%	0.7%	0.8%
	Black, not of Hispanic Origin	71	45	49	1.4%	1.0%	1.1%
	Non-resident Alien	21	8	6	0.4%	0.2%	0.1%
	Not Specified	25	27	31	0.5%	0.6%	0.7%
	Other Hispanic Americans	13	8	8	0.3%	0.2%	0.2%
	White, not of Hispanic origin	359	348	361	7.0%	7.6%	8.4%
		<b>521</b>	<b>469</b>	<b>491</b>	<b>10.2%</b>	<b>10.3%</b>	<b>11.4%</b>

Student S	Student S	1	0%	0%	0%
Asian or Pacific Islander		0	0%	3	
Black, not of Hispanic Origin		3	0%	3	
Non-resident Alien		3	0%	3	
Not Specified		8	0%	3	
White, not of Hispanic Origin		3	0%	3	

**Table 1.6**  
**New Students (Combined)**  
**Enrollment by Major with 75 or more Students in Fall 2007**  
**Fall 2005-07**

Major	Count			Percent of Total		
	2007	2006	2005	2007	2006	2005
Undecided	616	547	546	12.1%	12.0%	12.7%
Pre-Pharmacy	518	465	483	10.2%	10.2%	11.2%
Pre-Business	267	251	262	5.2%	5.5%	6.1%
Nursing	222	155	146	4.4%	3.4%	3.4%
Exercise Science	199	164	153	3.9%	3.6%	3.5%
Conditional	154	138	121	3.0%	3.0%	2.8%
Pre-Major	129	243	172	2.5%	5.3%	4.0%
Pre-Medical	125	97	90	2.5%	2.1%	2.1%
Mechanical Engineering	123	107	123	2.4%	2.3%	2.9%
Pre-Baccalaureate Nursing	122	58	59	2.4%	1.3%	1.4%
Psychology	115	109	94	2.3%	2.4%	2.2%
General Studies	110	90	98	2.2%	2.0%	2.3%
Pre-Accounting	109	101	74	2.1%	2.2%	1.7%
Criminal Justice	104	91	100	2.0%	2.0%	2.3%
Communication	96	89	102	1.9%	1.9%	2.4%
Early Childhood Education (Pre K-3)	88	94	83	1.7%	2.1%	1.9%
Biology	83	76	56	1.6%	1.7%	1.3%
Pre-Marketing	81	80	61	1.6%	1.7%	1.4%
Pre-Nursing	81	43	38	1.6%	0.9%	0.9%
Adolescent and Young Adult Education	78	67	80	1.5%	1.5%	1.9%
Computer Science and Engineering	74	86	71	1.5%	1.9%	1.6%
All Others Combined	1,599	1,421	1,299	31.4%	31.1%	30.1%
<b>Grand Total</b>	<b>5,093</b>	<b>4,572</b>	<b>4,311</b>	<b>100.0%</b>	<b>100.0%</b>	<b>100.0%</b>

Source: Institutional Analysis System (IAS): 2007.

**Table 1.7**

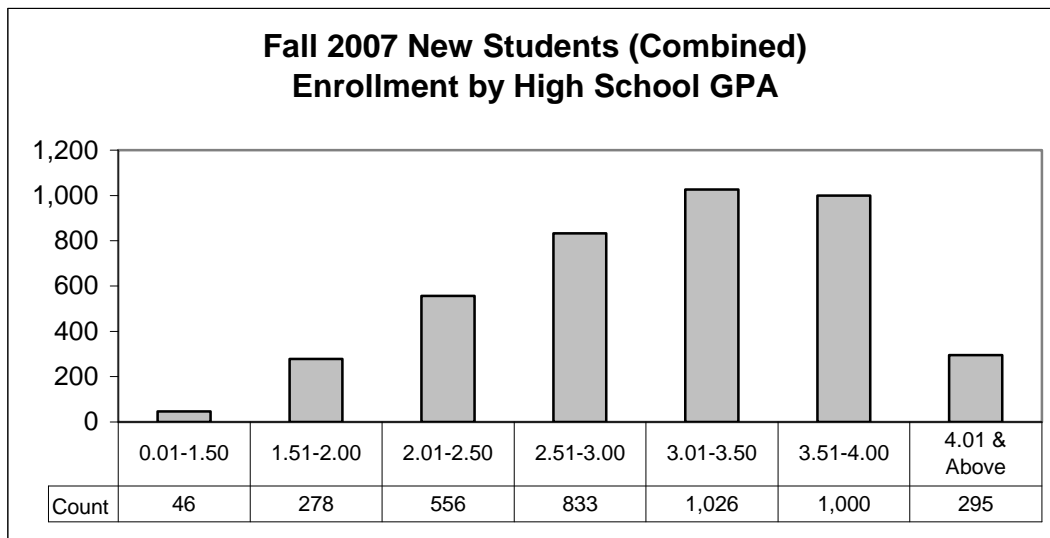
<b>Credit Hour Load Status</b>	<b>2007</b>	<b>2006</b>	<b>2005</b>	<b>2007</b>	<b>2006</b>	<b>2005</b>
Full-time	4,637	4,171	3,938	91.0%	91.2%	91.3%
Part-time	456	401	373	9.0%	8.8%	8.7%
<b>Grand Total</b>						

**Table and Figure 1.8**  
**New Students (Combined)**  
**Enrollment by High School GPA**  
**Fall 2005-07**

High School GPA	Count			Percent of Total		
	2007	2006	2005	2007	2006	2005
0.01-1.50	46	49	54	0.9%	1.1%	1.3%
1.51-2.00	278	244	215	5.5%	5.3%	5.0%
2.01-2.50	556	558	527	10.9%	12.2%	12.2%
2.51-3.00	833	656	636	16.4%	14.3%	14.8%
3.01-3.50	1,026	905	863	20.1%	19.8%	20.0%
3.51-4.00	1,000	882	880	19.6%	19.3%	20.4%
4.01 & Above	295	217	212	5.8%	4.7%	4.9%
Missing	1,059	1,061	924	20.8%	23.2%	21.4%
<b>Grand Total</b>	<b>5,093</b>	<b>4,572</b>	<b>4,311</b>	<b>100.0%</b>	<b>100.0%</b>	<b>100.0%</b>

Source: Institutional Analysis System (IAS): 2007.

	<u>2007</u>	<u>2006</u>	<u>2005</u>
<b>Average High School GPA</b>	<b>3.09</b>	<b>3.07</b>	<b>3.08</b>







**Table 1.10**  
**New Students (Combined)**  
**Enrollment by State of Origin**  
**Fall 2005-07**

State Name	Count			Percent of Total		
	2007	2006	2005	2007	2006	2005
Ohio	4,416	3,984	3,862	86.7%	87.1%	89.6%
Michigan	405	347	280	8.0%	7.6%	6.5%
Pennsylvania	24	12	11	0.5%	0.3%	0.3%
Indiana	14	17	9	0.3%	0.4%	0.2%
Illinois	10	23	16	0.2%	0.5%	0.4%
California	9	7	12	0.2%	0.2%	0.3%
New York	9	9	4	0.2%	0.2%	0.1%
New Jersey	6	2	10	0.1%	0.0%	0.2%
Florida	5	8	10	0.1%	0.2%	0.2%
Texas	4	3	7	0.1%	0.1%	0.2%
Virginia	4	5	1	0.1%	0.1%	0.0%
Maryland	3	1	6	0.1%	0.0%	0.1%
Massachusetts	3	3	1	0.1%	0.1%	0.0%
Missouri	3	1	0	0.1%	0.0%	0.0%
Tennessee	3	1	1	0.1%	0.0%	0.0%
Alaska	2	1	0	0.0%	0.0%	0.0%
Delaware	2	0	0	0.0%	0.0%	0.0%
Georgia	2	5	1	0.0%	0.1%	0.0%
Kentucky	2	3	1	0.0%	0.1%	0.0%
North Carolina	2	1	3	0.0%	0.0%	0.1%
Rhode Island	2	0	0	0.0%	0.0%	0.0%
Wisconsin	2	2	1	0.0%	0.0%	0.0%
Colorado	1	0	0	0.0%	0.0%	0.0%
Maine	1	0	1	0.0%	0.0%	0.0%
Nevada	1	0	0	0.0%	0.0%	0.0%
Oklahoma	1	0	0	0.0%	0.0%	0.0%
Oregon	1	1	0	0.0%	0.0%	0.0%
South Carolina	1	0	1	0.0%	0.0%	0.0%
Alabama	0	1	0	0.0%	0.0%	0.0%
Arizona	0	1	0	0.0%	0.0%	0.0%
Connecticut	0	1	1	0.0%	0.0%	0.0%
District of Columbia	0	0	1	0.0%	0.0%	0.0%
Iowa	0	1	0	0.0%	0.0%	0.0%
Minnesota	0	1	0	0.0%	0.0%	0.0%
Montana	0	1	0	0.0%	0.0%	0.0%
Nebraska	0	0	1	0.0%	0.0%	0.0%
Washington	0	0	1	0.0%	0.0%	0.0%
West Virginia	0	1	2	0.0%	0.0%	0.0%
Wyoming	0	0	1	0.0%	0.0%	0.0%
Not Specified	0	3	2	0.0%	0.1%	0.0%
Virgin Islands	1	2	0	0.0%	0.0%	0.0%
Puerto Rico	0	1	0	0.0%	0.0%	0.0%
International	154	123	64	3.0%	2.7%	1.5%
<b>Grand Total</b>	<b>5,093</b>	<b>4,572</b>	<b>4,311</b>	<b>100.0%</b>	<b>100.0%</b>	<b>100.0%</b>

Source: Institutional Analysis System (IAS): 2007.

	<u>2007</u>	<u>2006</u>	<u>2005</u>
<b><i>Number of States Represented by All New Students</i></b>	<b>28</b>	<b>28</b>	<b>26</b>



## **New Direct from High School (DHS) Students**

Includes: New enrolled students with high school graduation dates less than or equal to one year before the first day of the fall term.

**Note:** This category does not include any international students.

**Table 2.1**  
**New DHS Students**  
**Applied, Admitted & Enrolled**  
**Fall 2007**

<b>College</b>	<b>Applied</b>	<b>Admitted</b>	<b>Enrolled</b>	<b>Enrolled Yield</b>
Arts & Sciences	2,293	2,096	734	35%
Business	1,272	1,127	465	41%
Concurrent	n/a	n/a	0	n/a
Education	637	612	246	40%
Engineering	1,484	1,249	480	38%
Health & Human Services	1,135	908	349	38%
Nursing	900	770	329	43%
Pharmacy	908	905	440	49%
University College	235	314	28	9%
Student Success Center	1,199	1,264	499	39%
<b>Total</b>	<b>10,063</b>	<b>9,245</b>	<b>3,570</b>	<b>39%</b>

**Source:** Fall 2007 Final Fall Application Tally & Institutional Analysis System (IAS), 2007.

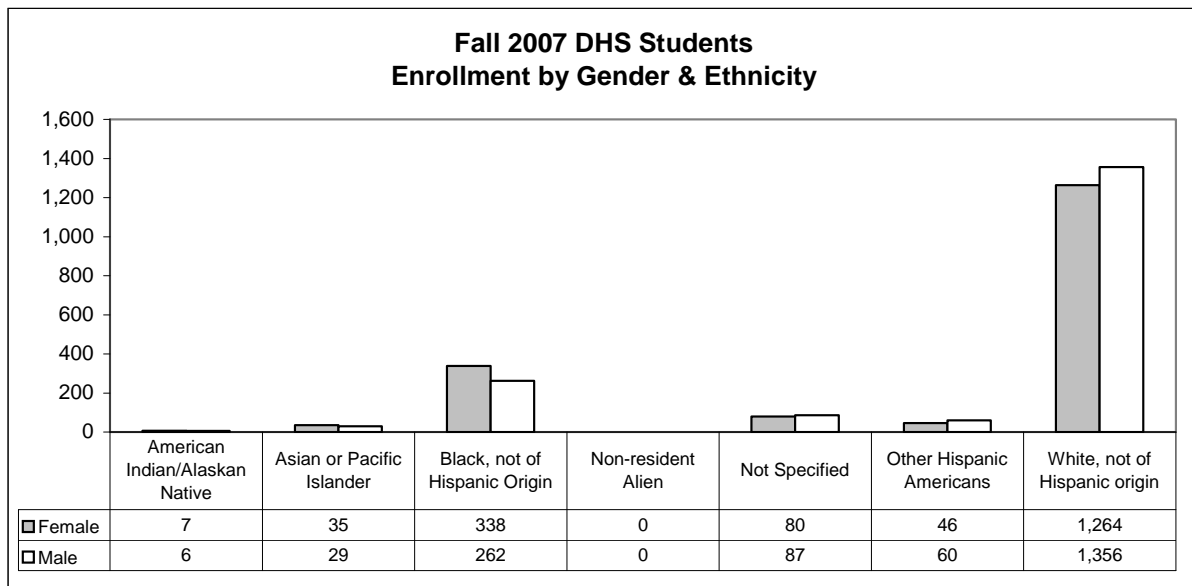
**Notes:** International students are not included in these figures.  
 Students may apply to one college, but might be admitted to another.

**Table and Figure 2.2**  
**New DHS Students**  
**Enrollment by Gender and Ethnicity**  
**Fall 2005-07**

Gender	Ethnicity	Count			Percent of Total		
		2007	2006	2005	2007	2006	2005
<i>Female</i>	American Indian/Alaskan Native	7	5	5	0.2%	0.2%	0.2%
	Asian or Pacific Islander	35	31	37	1.0%	1.0%	1.2%
	Black, not of Hispanic Origin	338	258	247	9.5%	8.2%	7.9%
	Non-resident Alien	0	0	0	0.0%	0.0%	0.0%
	Not Specified	80	81	71	2.2%	2.6%	2.3%
	Other Hispanic Americans	46	47	42	1.3%	1.5%	1.4%
	White, not of Hispanic origin	1,264	1,082	1,079	35.4%	34.4%	34.7%
	<b>Female Total</b>	<b>1,770</b>	<b>1,504</b>	<b>1,481</b>	<b>49.6%</b>	<b>47.8%</b>	<b>47.6%</b>
<i>Male</i>	American Indian/Alaskan Native	6	4	1	0.2%	0.1%	0.0%
	Asian or Pacific Islander	29	27	26	0.8%	0.9%	0.8%
	Black, not of Hispanic Origin	262	232	234	7.3%	7.4%	7.5%
	Non-resident Alien	0	0	0	0.0%	0.0%	0.0%
	Not Specified	87	88	80	2.4%	2.8%	2.6%
	Other Hispanic Americans	60	51	39	1.7%	1.6%	1.3%
	White, not of Hispanic origin	1,356	1,239	1,248	38.0%	39.4%	40.1%
	<b>Male Total</b>	<b>1,800</b>	<b>1,641</b>	<b>1,628</b>	<b>50.4%</b>	<b>52.2%</b>	<b>52.4%</b>
<i>Female &amp; Male Combined</i>	American Indian/Alaskan Native	13	9	6	0.4%	0.3%	0.2%
	Asian or Pacific Islander	64	58	63	1.8%	1.8%	2.0%
	Black, not of Hispanic Origin	600	490	481	16.8%	15.6%	15.5%
	Non-resident Alien	0	0	0	0.0%	0.0%	0.0%
	Not Specified	167	169	151	4.7%	5.4%	4.9%
	Other Hispanic Americans	106	98	81	3.0%	3.1%	2.6%
	White, not of Hispanic origin	2,620	2,321	2,327	73.4%	73.8%	74.8%
	<b>Grand Total</b>	<b>3,570</b>	<b>3,145</b>	<b>3,109</b>	<b>100.0%</b>	<b>100.0%</b>	<b>100.0%</b>

Source: Institutional Analysis System (IAS): 2007.

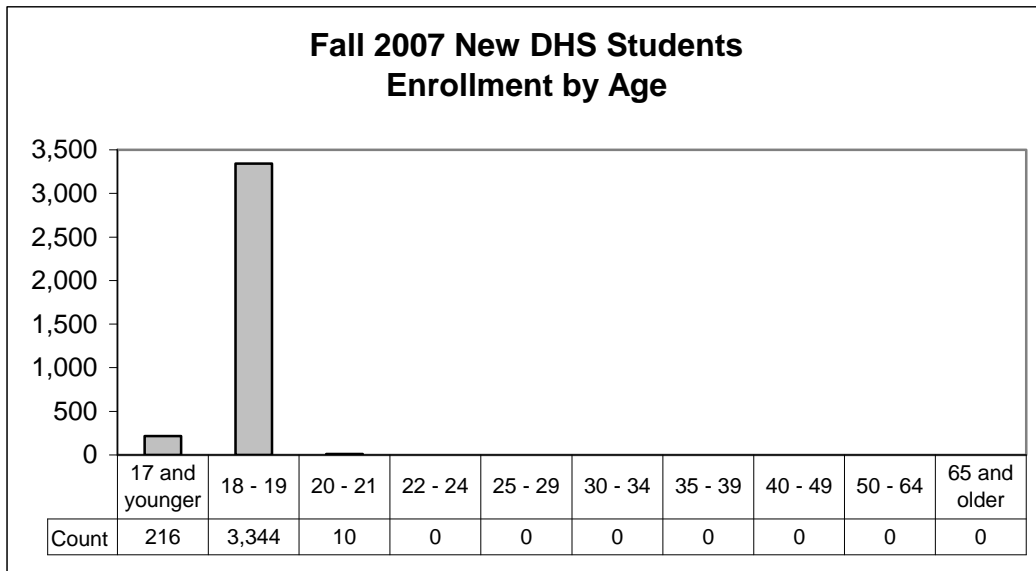
Note: Ethnicity categories follow the federal reporting standards for IPEDS data submission.



**Table and Figure 2.3  
New DHS Students  
Enrollment by Age Group  
Fall 2005-07**

Age Group	Count			Percent of Total		
	2007	2006	2005	2007	2006	2005
17 and younger	216	186	149	6.1%	5.9%	4.8%
18 - 19	3,344	2,953	2,947	93.7%	93.9%	94.8%
20 - 21	10	6	13	0.3%	0.2%	0.4%
22 - 24	0	0	0	0.0%	0.0%	0.0%
25 - 29	0	0	0	0.0%	0.0%	0.0%
30 - 34	0	0	0	0.0%	0.0%	0.0%
35 - 39	0	0	0	0.0%	0.0%	0.0%
40 - 49	0	0	0	0.0%	0.0%	0.0%
50 - 64	0	0	0	0.0%	0.0%	0.0%
65 and older	0	0	0	0.0%	0.0%	0.0%
Unknown	0	0	0	0.0%	0.0%	0.0%
<b>Grand Total</b>	<b>3,570</b>	<b>3,145</b>	<b>3,109</b>	<b>100.0%</b>	<b>100.0%</b>	<b>100.0%</b>

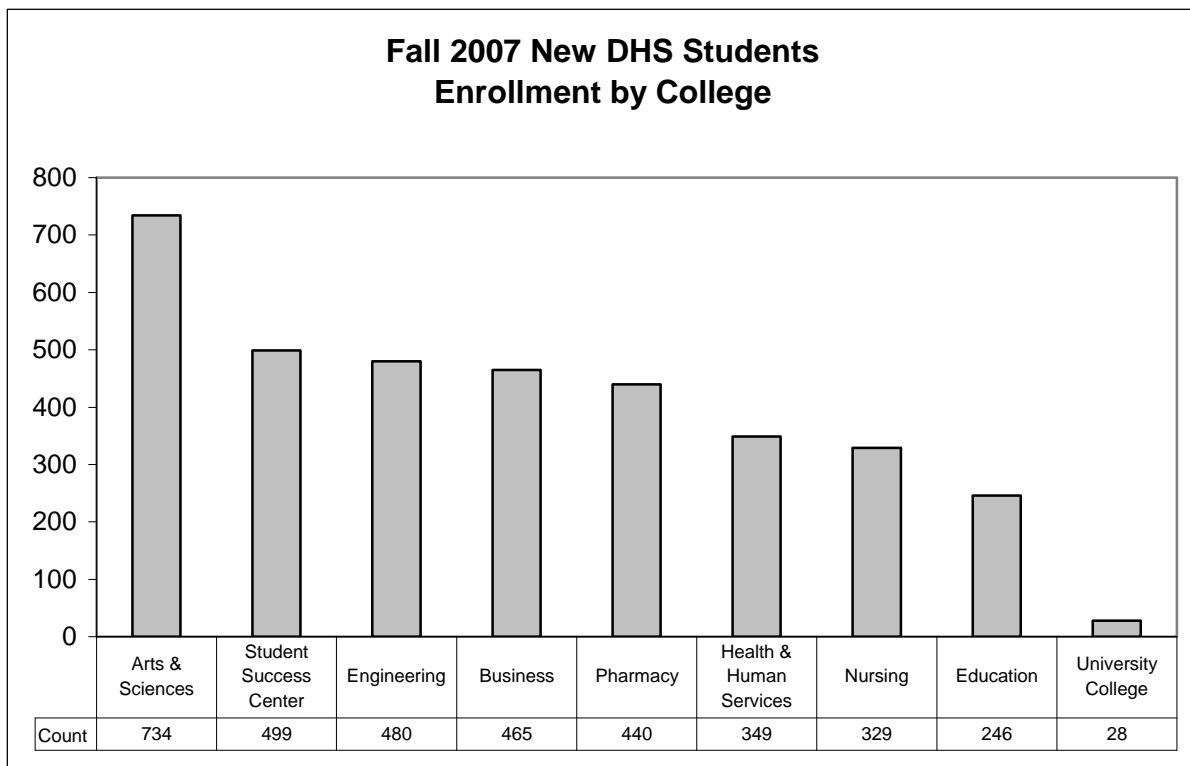
Source: Institutional Analysis System (IAS): 2007.



**Table and Figure 2.4  
New DHS Students  
Enrollment by College  
Fall 2005-07**

College	Count			Percent of Total		
	2007	2006	2005	2007	2006	2005
Arts & Sciences	734	585	594	20.6%	18.6%	19.1%
Student Success Center	499	460	447	14.0%	14.6%	14.4%
Engineering	480	447	459	13.4%	14.2%	14.8%
Business	465	392	398	13.0%	12.5%	12.8%
Pharmacy	440	390	421	12.3%	12.4%	13.5%
Health & Human Services	349	495	472	9.8%	15.7%	15.2%
Nursing	329	5	n/a	9.2%	0.2%	n/a
Education	246	221	205	6.9%	7.0%	6.6%
University College	28	150	113	0.8%	4.8%	3.6%
<b>Grand Total</b>	<b>3,570</b>	<b>3,145</b>	<b>3,109</b>	<b>100.0%</b>	<b>100.0%</b>	<b>100.0%</b>

Source: Institutional Analysis System (IAS): 2007.



**Table 2.5**

<b>College</b>	<b>Ethnicity</b>	<b>2007</b>	<b>2006</b>	<b>2005</b>	<b>2007</b>	<b>2006</b>	<b>2005</b>
<i>Arts &amp; Sciences</i>	American Indian/Alaskan Native	5	1	0	0.1%	0.0%	0.0%
	Asian or Pacific Islander	16	8	12	0.4%	0.3%	0.4%
	Black, not of Hispanic Origin	134	110	101	3.8%	3.5%	3.2%
	Non-resident Alien	0	0	0	0.0%	0.0%	0.0%
	Not Specified	46	51	33	1.3%	1.6%	1.1%
	Other Hispanic Americans	22	23	21	0.6%	0.7%	0.7%
	White, not of Hispanic origin	511	392	427	14.3%	12.5%	13.7%
		<b>734</b>	<b>585</b>	<b>594</b>	<b>20.6%</b>	<b>18.6%</b>	<b>19.1%</b>
<i>Business</i>	American Indian/Alaskan Native	0	1	1	0.0%	0.0%	0.0%
	Asian or Pacific Islander	3	9	5	0.1%	0.3%	0.2%
	Black, not of Hispanic Origin	89	46	53	2.5%	1.5%	1.7%
	Non-resident Alien	0	0	0	0.0%	0.0%	0.0%
	Not Specified	23	20	24	0.6%	0.6%	0.8%
	Other Hispanic Americans	21	9	7	0.6%	0.3%	0.2%
	White, not of Hispanic origin	329	307	308	9.2%	9.8%	9.9%
		<b>465</b>	<b>392</b>	<b>398</b>	<b>13.0%</b>	<b>12.5%</b>	<b>12.8%</b>
<i>Education</i>	American Indian/Alaskan Native	0	1	1	0.0%	0.0%	0.0%
	Asian or Pacific Islander	1	0	1	0.0%	0.0%	0.0%
	Black, not of Hispanic Origin	26	29	30	0.7%	0.9%	1.0%
	Non-resident Alien	0	0	0	0.0%	0.0%	0.0%
	Not Specified	7	7	2	0.2%	0.2%	0.1%
	Other Hispanic Americans	7	9	7	0.2%	0.3%	0.2%
	White, not of Hispanic origin	205	175	164	5.7%	5.6%	5.3%



College	Ethnicity	Count			Percent of Total		
		2007	2006	2005	2007	2006	2005
<i>Nursing</i>	American Indian/Alaskan Native	1	0	n/a	0.0%	0.0%	n/a
	Asian or Pacific Islander	5	0	n/a	0.1%	0.0%	n/a
	Black, not of Hispanic Origin	67	1	n/a	1.9%	0.0%	n/a
	Non-resident Alien	0	0	n/a	0.0%	0.0%	n/a
	Not Specified	12	1	n/a	0.3%	0.0%	n/a
	Other Hispanic Americans	10	0	n/a	0.3%	0.0%	n/a
	White, not of Hispanic origin	234	3	n/a	6.6%	0.1%	n/a
	<b>Nursing Total</b>	<b>329</b>	<b>5</b>	<b>n/a</b>	<b>9.2%</b>	<b>0.2%</b>	<b>n/a</b>
<i>Pharmacy</i>	American Indian/Alaskan Native	2	2	1	0.1%	0.1%	0.0%
	Asian or Pacific Islander	24	20	26	0.7%	0.6%	0.8%
	Black, not of Hispanic Origin	58	34	37	1.6%	1.1%	1.2%
	Non-resident Alien	0	0	0	0.0%	0.0%	0.0%
	Not Specified	17	18	23	0.5%	0.6%	0.7%
	Other Hispanic Americans	12	7	7	0.3%	0.2%	0.2%
	White, not of Hispanic origin	327	309	327	9.2%	9.8%	10.5%
	<b>Pharmacy Total</b>	<b>440</b>	<b>390</b>	<b>421</b>	<b>12.3%</b>	<b>12.4%</b>	<b>13.5%</b>
<i>Student Success Center</i>	American Indian/Alaskan Native	3	0	1	0.1%	0.0%	0.0%
	Asian or Pacific Islander	3	8	5	0.1%	0.3%	0.2%
	Black, not of Hispanic Origin	147	107	96	4.1%	3.4%	3.1%
	Non-resident Alien	0	0	0	0.0%	0.0%	0.0%
	Not Specified	26	28	26	0.7%	0.9%	0.8%
	Other Hispanic Americans	11	18	11	0.3%	0.6%	0.4%
	White, not of Hispanic origin	309	299	308	8.7%	9.5%	9.9%
	<b>Student Success Center Total</b>	<b>499</b>	<b>460</b>	<b>447</b>	<b>14.0%</b>	<b>14.6%</b>	<b>14.4%</b>
<i>University College</i>	American Indian/Alaskan Native	0	1	0	0.0%	0.0%	0.0%
	Asian or Pacific Islander	0	1	2	0.0%	0.0%	0.1%
	Black, not of Hispanic Origin	13	81	66	0.4%	2.6%	2.1%
	Non-resident Alien	0	0	0	0.0%	0.0%	0.0%
	Not Specified	2	9	3	0.1%	0.3%	0.1%
	Other Hispanic Americans	0	5	2	0.0%	0.2%	0.1%
	White, not of Hispanic origin	13	53	40	0.4%	1.7%	1.3%
	<b>University College Total</b>	<b>28</b>	<b>150</b>	<b>113</b>	<b>0.8%</b>	<b>4.8%</b>	<b>3.6%</b>
	<b>Grand Total</b>	<b>3,570</b>	<b>3,145</b>	<b>3,109</b>	<b>100.0%</b>	<b>100.0%</b>	<b>100.0%</b>

Source: Institutional Analysis System (IAS): 2007.

Note: Ethnicity categories follow the federal reporting standards for IPEDS data submission.

**Table 2.6**

<b>Major</b>	<b>2007</b>	<b>2006</b>	<b>2005</b>	<b>2007</b>	<b>2006</b>	<b>2005</b>
Undecided	464	425	438	13.0%	13.5%	14.1%
Pre-Pharmacy	437	386	413	12.2%	12.3%	13.3%
Pre-Business	198	200	219	5.5%	6.4%	7.0%
Nursing	197	138	126	5.5%	4.4%	4.1%
Exercise Science	166	134	125	4.6%	4.3%	4.0%
Pre-Major	127	230	166	3.6%	7.3%	5.3%
Pre-Medical	118	86	82	3.3%	2.7%	2.6%
Mechanical Engineering	106	95	113	3.0%	3.0%	3.6%
Pre-Baccalaureate Nursing	96	39	46	2.7%	1.2%	1.5%
General Studies	92	67	72	2.6%	2.1%	2.3%
Psychology	79	72	64	2.2%	2.3%	2.1%
Pre-Accounting	76	71	44	2.1%	2.3%	1.4%
Early Childhood Education (Pre K-3)	72	74	50	2.0%	2.4%	1.6%
Criminal Justice	71	59	71	2.0%	1.9%	2.3%
Communication	64	55	73	1.8%	1.7%	2.3%
Computer Science and Engineering	63	68	57	1.8%	2.2%	1.8%
Adolescent and Young Adult Education	59	45	58	1.7%	1.4%	1.9%
Pre-Marketing	58	51	48	1-2788.1(4.1)1		51

48n3957.022/

**Table 2.7**  
**New DHS Students**  
**Enrollment by Credit Hour Load Status**  
**Fall 2005-07**

<b>Credit Hour Load Status</b>	<b>Count</b>			<b>Percent of Total</b>		
	<b>2007</b>	<b>2006</b>	<b>2005</b>	<b>2007</b>	<b>2006</b>	<b>2005</b>
Full-time	3,516	3,079	3,035	98.5%	97.9%	97.6%
Part-time	54	66	74	1.5%	2.1%	2.4%
<b>Grand Total</b>	<b>3,570</b>	<b>3,145</b>	<b>3,109</b>	<b>100.0%</b>	<b>100.0%</b>	<b>100.0%</b>

Source: Institutional Analysis System (IAS): 2007.

**Table 2.8**

<b>High School</b>	<b>2007</b>	<b>2006</b>	<b>2005</b>	<b>2007</b>	<b>2006</b>	<b>2005</b>
Sylvania Northview High School	93	66	50	2.6%	2.1%	1.6%
Central Catholic High School	81	85	52	2.3%	2.7%	1.7%
Whitmer Senior High School	79	54	53	2.2%	1.7%	1.7%
Roy C Start High School	71	48	39	2.0%	1.5%	1.3%
Sylvania Southview High School	66	60	65	1.8%	1.9%	2.1%
Saint Francis de Sales High Sc	57	41	46	1.6%	1.3%	1.5%

\_\_\_\_\_

\_\_\_\_\_

\_\_\_\_\_

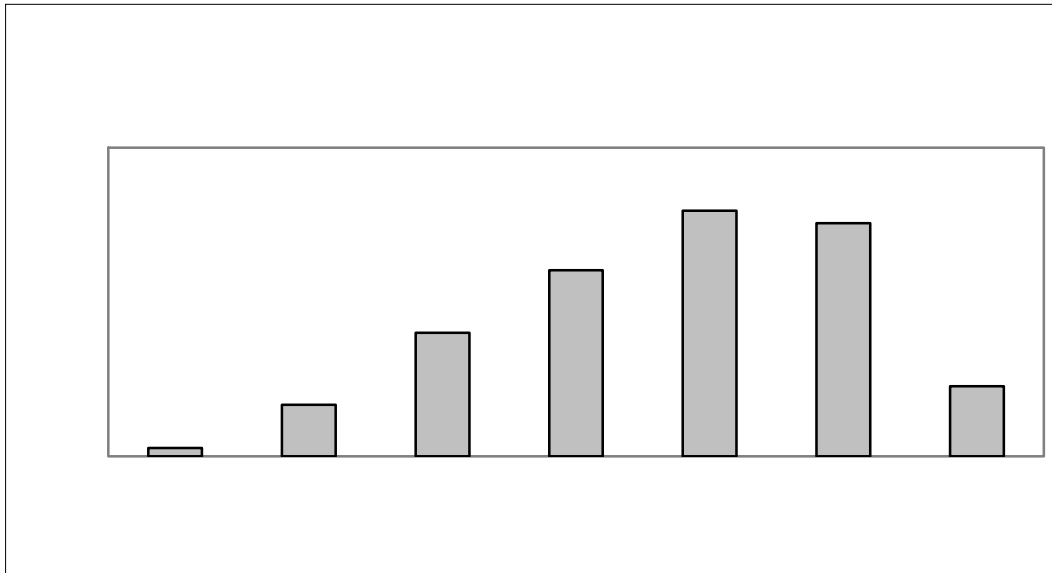
\_\_\_\_\_

**Table and Figure 2.9  
New DHS Students  
Enrollment by High School GPA  
Fall 2005-07**

High School GPA	Count			Percent of Total		
	2007	2006	2005	2007	2006	2005
0.01-1.50	32	34	40	0.9%	1.0%	1.1%
1.51-2.00	200	195	164	5.6%	5.5%	4.6%
2.01-2.50	480	482	467	13.4%	13.5%	13.1%
2.51-3.00	724	580	573	20.3%	16.2%	16.1%
3.01-3.50	955	826	811	26.8%	23.1%	22.7%
3.51-4.00	907	820	842	25.4%	23.0%	23.6%
4.01 & Above	272	207	206	7.6%	5.8%	5.8%
Missing	0	1	6	0.0%	0.0%	0.2%
<b>Grand Total</b>	<b>3,570</b>	<b>3,145</b>	<b>3,109</b>	<b>100.0%</b>	<b>100.0%</b>	<b>100.0%</b>

Source: Institutional Analysis System (IAS): 2007.

	<u>2007</u>	<u>2006</u>	<u>2005</u>
<b>Average High School GPA</b>	<b>3.12</b>	<b>3.10</b>	<b>3.12</b>





**Table 2.11**  
**New DHS Students**  
**Enrollment by Residency**  
**Fall 2005-07**

<b>Residency</b>	<b>Count</b>			<b>Percent of Total</b>		
	<b>2007</b>	<b>2006</b>	<b>2005</b>	<b>2007</b>	<b>2006</b>	<b>2005</b>
Resident	3,254	2,896	2,887	91.1%	92.1%	92.9%
Resident - MI Reciprocity	162	138	120	4.5%	4.4%	3.9%
Non-Resident	154	111	102	4.3%	3.5%	3.3%
<b>Grand Total</b>	<b>3,570</b>	<b>3,145</b>	<b>3,109</b>	<b>100.0%</b>	<b>100.0%</b>	<b>100.0%</b>

**Source:** Institutional Analysis System (IAS): 2007.

**Table 2.12**

<b>State Name</b>	<b>2007</b>	<b>2006</b>	<b>2005</b>	<b>2007</b>	<b>2006</b>	<b>2005</b>
Ohio	3,252	2,898	2,888	91.1%	92.1%	92.9%
Michigan	234	177	159	6.6%	5.6%	5.1%
Pennsylvania	21	7	8	0.6%	0.2%	0.3%
Indiana	11	13	7	0.3%	0.4%	0.2%
Illinois	10	19	12	0.3%	0.6%	0.4%
California	7	4	2	0.2%	0.1%	0.1%
New York	6	5	2	0.2%	0.2%	0.1%
New Jersey	5	1	9	0.1%	0.0%	0.3%
Florida	3	4	6	0.1%	0.1%	0.2%
Delaware	2	0	0	0.1%	0.0%	0.0%
Massachusetts	2	0	1	0.1%	0.0%	0.0%
Missouri	2	1	0	0.1%	0.0%	0.0%
Virginia	2	2	1	0.1%	0.1%	0.0%
Colorado	1	0	0	0.0%	0.0%	0.0%
Kentucky	1	1	0	0.0%	0.0%	0.0%
Maine	1	0	1	0.0%	0.0%	0.0%
Maryland	1	0	2	0.0%	0.0%	0.1%
Nevada	1	0	0	0.0%	0.0%	0.0%
North Carolina	1	0	2	0.0%	0.0%	0.1%
South Carolina	1	0	0	0.0%	0.0%	0.0%
Tennessee	1	0	1	0.0%	0.0%	0.0%
Texas	1	0	3	0.0%	0.0%	0.1%
Wisconsin	1	2	0	0.0%	0.1%	0.0%
Alabama	0	1	0	0.0%	0.0%	0.0%
Alaska	0	1	0	0.0%	0.0%	0.0%
Arizona	0	1	0	0.0%	0.0%	0.0%
Georgia	0	1	0	0.0%	0.0%	0.0%
Nebraska	0	0	1	0.0%	0.0%	0.0%
Washington	0	0	1	0.0%	0.0%	0.0%
West Virginia	0	0	2	0.0%	0.0%	0.1%
Wyoming	0	0	1	0.0%	0.0%	0.0%
Virgin Islands	0	2	0	0.0%	0.1%	0.0%
Puerto Rico	0	1	0	0.0%	0.0%	0.0%
International	3	4	0	0.1%	0.1%	0.0%
<b>Grand Total</b>	<b>3,570</b>	<b>3,145</b>	<b>3,109</b>	<b>100.0%</b>	<b>100.0%</b>	<b>100.0%</b>

t4 .0%

W(Inter)-6(na0)-3.1%



**Table 2.13**

<b>County Name</b>	<b>2007</b>	<b>2006</b>	<b>2005</b>	<b>2007</b>	<b>2006</b>	<b>2005</b>
Lucas	966	798	674	27.1%	25.4%	21.7%
Cuyahoga	499	422	450	14.0%	13.4%	14.5%
Monroe MI	161	134	121	4.5%	4.3%	3.9%
Lorain	123	100	127	3.4%	3.2%	4.1%
Summit	110	96	109	3.1%	3.1%	3.5%

## **New Adult Students**

Includes: New enrolled students who have

**Table 3.1**  
**New Adult Students**

<b>College</b>	<b>Applied</b>	<b>Admitted</b>	<b>Enrolled</b>	<b>Enrolled Yield</b>
Arts & Sciences	105	86	48	56%
Business	54	57	50	88%
Concurrent College	n/a	n/a	7	n/a
Education	25	19	16	84%
Engineering	45	30	26	87%
Health & Human Services	48	33	28	85%
Nursing	51	42	26	62%
Pharmacy	21	20	13	65%
University College	46	22	12	55%
Student Success Center	119	128	121	95%
<b>Total</b>	<b>514</b>	<b>437</b>	<b>347</b>	<b>79%</b>

**Source:** Fall 2007 Final Fall Application Tally & Institutional Analysis System (IAS), 2007.

**Notes:** International students are not included in these figures.

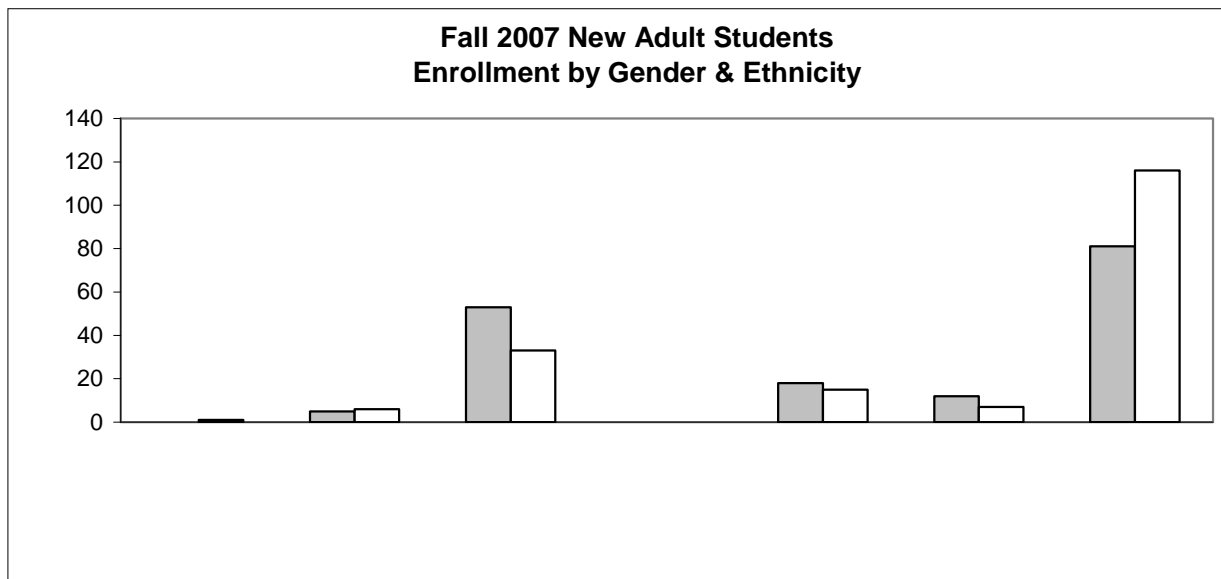
Students may apply to one college, but might be admitted to another.

**Table and Figure 3.2  
New Adult Students  
Enrollment by Gender and Ethnicity  
Fall 2005-07**

Gender	Ethnicity	Count			Percent of Total		
		2007	2006	2005	2007	2006	2005
<i>Female</i>	American Indian/Alaskan Native	0	1	0	0.0%	0.3%	0.0%
	Asian or Pacific Islander	5	5	3	1.4%	1.7%	1.1%
	Black, not of Hispanic Origin	53	34	24	15.3%	11.6%	8.5%
	Non-resident Alien	0	0	0	0.0%	0.0%	0.0%
	Not Specified	18	15	8	5.2%	5.1%	2.8%
	Other Hispanic Americans	12	2	3	3.5%	0.7%	1.1%
	White, not of Hispanic origin	81	78	89	23.3%	26.7%	31.4%
	<b>Female Total</b>	<b>169</b>	<b>135</b>	<b>127</b>	<b>48.7%</b>	<b>46.2%</b>	<b>44.9%</b>
<i>Male</i>	American Indian/Alaskan Native	1	1	1	0.3%	0.3%	0.4%
	Asian or Pacific Islander	6	2	4	1.7%	0.7%	1.4%
	Black, not of Hispanic Origin	33	43	39	9.5%	14.7%	13.8%
	Non-resident Alien	0	0	0	0.0%	0.0%	0.0%
	Not Specified	15	11	13	4.3%	3.8%	4.6%
	Other Hispanic Americans	7	5	6	2.0%	1.7%	2.1%
	White, not of Hispanic origin	116	95	93	33.4%	32.5%	32.9%
	<b>Male Total</b>	<b>178</b>	<b>157</b>	<b>156</b>	<b>51.3%</b>	<b>53.8%</b>	<b>55.1%</b>
<i>Female &amp; Male Combined</i>	American Indian/Alaskan Native	1	2	1	0.3%	0.7%	0.4%
	Asian or Pacific Islander	11	7	7	3.2%	2.4%	2.5%
	Black, not of Hispanic Origin	86	77	63	24.8%	26.4%	22.3%
	Non-resident Alien	0	0	0	0.0%	0.0%	0.0%
	Not Specified	33	26	21	9.5%	8.9%	7.4%
	Other Hispanic Americans	19	7	9	5.5%	2.4%	3.2%
	White, not of Hispanic origin	197	173	182	56.8%	59.2%	64.3%
	<b>Grand Total</b>	<b>347</b>	<b>292</b>	<b>283</b>	<b>100.0%</b>	<b>100.0%</b>	<b>100.0%</b>

Source: Institutional Analysis System (IAS): 2007.

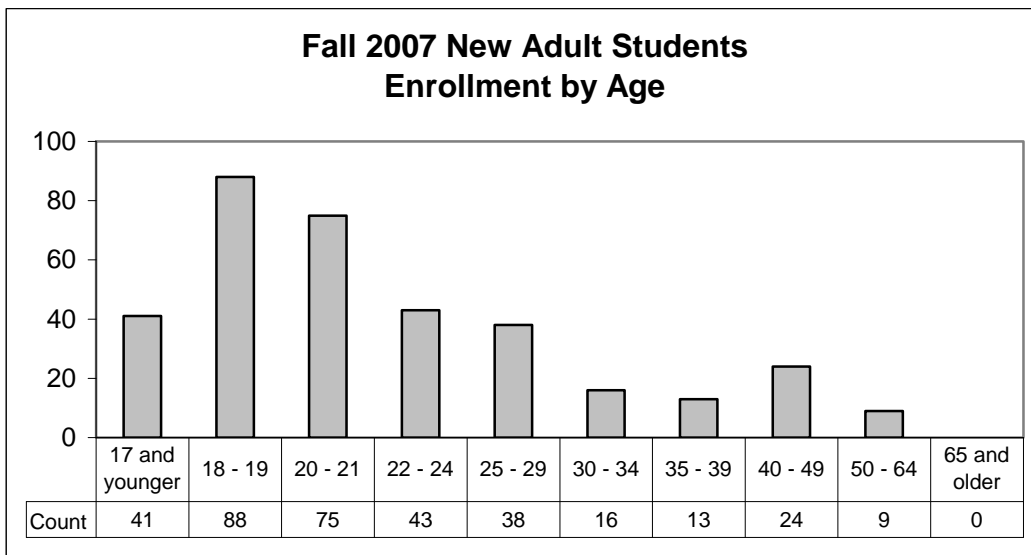
Note: Ethnicity categories follow the federal reporting standards for IPEDS data submission.



**Table and Figure 3.3  
New Adult Students  
Enrollment by Age Group  
Fall 2005-07**

Age Group	Count			Percent of Total		
	2007	2006	2005	2007	2006	2005
17 and younger	41	4	1	11.8%	1.4%	0.4%
18 - 19	88	83	84	25.4%	28.4%	29.7%
20 - 21	75	75	66	21.6%	25.7%	23.3%
22 - 24	43	53	53	12.4%	18.2%	18.7%
25 - 29	38	24	35	11.0%	8.2%	12.4%
30 - 34	16	12	11	4.6%	4.1%	3.9%
35 - 39	13	14	9	3.7%	4.8%	3.2%
40 - 49	24	16	14	6.9%	5.5%	4.9%
50 - 64	9	9	10	2.6%	3.1%	3.5%
65 and older	0	2	0	0.0%	0.7%	0.0%
Unknown	0	0	0	0.0%	0.0%	0.0%
<b>Grand Total</b>	<b>347</b>	<b>292</b>	<b>283</b>	<b>100.0%</b>	<b>100.0%</b>	<b>100.0%</b>

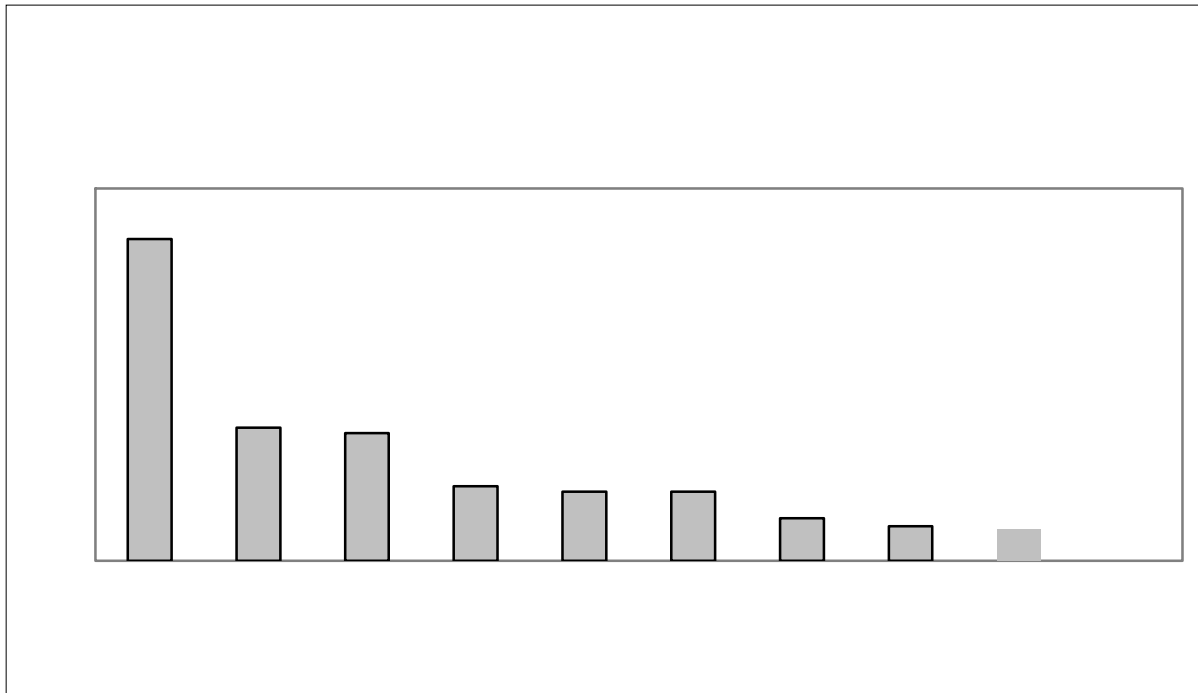
Source: Institutional Analysis System (IAS): 2007.



**Table and Figure 3.4  
New Adult Students  
Enrollment by College  
Fall 2005-07**

College	Count			Percent of Total		
	2007	2006	2005	2007	2006	2005
Student Success Center	121	77	50	34.9%	22.2%	14.4%
Business	50	27	39	14.4%	7.8%	11.2%
Arts & Sciences	48	60	72	13.8%	17.3%	20.7%
Health & Human Services	28	47	46	8.1%	13.5%	13.3%
Engineering	26	18	19	7.5%	5.2%	5.5%
Nursing	26	11	n/a	7.5%	3.2%	n/a
Education	16	16	21	4.6%	4.6%	6.1%
Pharmacy	13	14	8	3.7%	4.0%	2.3%
University College	12	18	25	3.5%	5.2%	7.2%
Concurrent College	7	4	3	2.0%	1.2%	0.9%
<b>Grand Total</b>	<b>347</b>	<b>292</b>	<b>283</b>	<b>100.0%</b>	<b>100.0%</b>	<b>100.0%</b>

Source: Institutional Analysis System (IAS): 2007.



**Table 3.5**  
**New Adult Students**  
**Enrollment by College and Ethnicity**  
**Fall 2005-07**

College	Ethnicity	Count			Percent of Total		
		2007	2006	2005	2007	2006	2005
<i>Arts &amp; Sciences</i>	American Indian/Alaskan Native	0	0	0	0.0%	0.0%	0.0%
	Asian or Pacific Islander	0	1	0	0.0%	0.3%	0.0%
	Black, not of Hispanic Origin	6	17	13	1.7%	5.8%	4.6%
	Non-resident Alien	0	0	0	0.0%	0.0%	0.0%
	Not Specified	6	6	6	1.7%	2.1%	2.1%
	Other Hispanic Americans	3	3	1	0.9%	1.0%	0.4%
	White, not of Hispanic origin	33	33	52	9.5%	11.3%	18.4%
	<b>Arts &amp; Sciences Total</b>	<b>48</b>	<b>60</b>	<b>72</b>	<b>13.8%</b>	<b>20.5%</b>	<b>25.4%</b>
<i>Business</i>	American Indian/Alaskan Native	1	0	0	0.3%	0.0%	0.0%
	Asian or Pacific Islander	1	0	2	0.3%	0.0%	0.7%
	Black, not of Hispanic Origin	13	10	9	3.7%	3.4%	3.2%
	Non-resident Alien	0	0	0	0.0%	0.0%	0.0%
	Not Specified	1	1	1	0.3%	0.3%	0.4%
	Other Hispanic Americans	3	0	0	0.9%	0.0%	0.0%
	White, not of Hispanic origin	31	16	27	8.9%	5.5%	9.5%
	<b>Business Total</b>	<b>50</b>	<b>27</b>	<b>39</b>	<b>14.4%</b>	<b>9.2%</b>	<b>13.8%</b>
<i>Concurrent College</i>	American Indian/Alaskan Native	0	0	0	0.0%	0.0%	0.0%
	Asian or Pacific Islander	0	0	0	0.0%	0.0%	0.0%
	Black, not of Hispanic Origin	0	0	0	0.0%	0.0%	0.0%
	Non-resident Alien	0	0	0	0.0%	0.0%	0.0%
	Not Specified	7	3	3	2.0%	1.0%	1.1%
	Other Hispanic Americans	0	0	0	0.0%	0.0%	0.0%
	White, not of Hispanic origin	0	1	0	0.0%	0.3%	0.0%
	<b>Concurrent College Total</b>	<b>7</b>	<b>4</b>	<b>3</b>	<b>2.0%</b>	<b>1.4%</b>	<b>1.1%</b>
<i>Education</i>	American Indian/Alaskan Native	0	0	0	0.0%	0.0%	0.0%
	Asian or Pacific Islander	0	1	0	0.0%	0.3%	0.0%
	Black, not of Hispanic Origin	2	5	5	0.6%	1.7%	1.8%
	Non-resident Alien	0	0	0	0.0%	0.0%	0.0%
	Not Specified	2	3	3	0.6%	1.0%	1.1%
	Other Hispanic Americans	0	0	2	0.0%	0.0%	0.7%
	White, not of Hispanic origin	12	7	11	3.5%	2.4%	3.9%
	<b>Education Total</b>	<b>16</b>	<b>16</b>	<b>21</b>	<b>4.6%</b>	<b>5.5%</b>	<b>7.4%</b>
<i>Engineering</i>	American Indian/Alaskan Native	0	0	0	0.0%	0.0%	0.0%
	Asian or Pacific Islander	0	0	0	0.0%	0.0%	0.0%
	Black, not of Hispanic Origin	5	4	5	1.4%	1.4%	1.8%
	Non-resident Alien	0	0	0	0.0%	0.0%	0.0%
	Not Specified	1	1	1	0.3%	0.3%	0.4%
	Other Hispanic Americans	1	0	1	0.3%	0.0%	0.4%
	White, not of Hispanic origin	19	13	12	5.5%	4.5%	4.2%
	<b>Engineering Total</b>	<b>26</b>	<b>18</b>	<b>19</b>	<b>7.5%</b>	<b>6.2%</b>	<b>6.7%</b>
<i>Health &amp; Human Services</i>	American Indian/Alaskan Native	0	0	1	0.0%	0.0%	0.4%
	Asian or Pacific Islander	0	0	0	0.0%	0.0%	0.0%
	Black, not of Hispanic Origin	9	17	10	2.6%	5.8%	3.5%
	Non-resident Alien	0	0	0	0.0%	0.0%	0.0%
	Not Specified	0	3	2	0.0%	1.0%	0.7%
	Other Hispanic Americans	3	2	4	0.9%	0.7%	1.4%
	White, not of Hispanic origin	16	36	29	4.6%	12.3%	10.2%
	<b>Health &amp; Human Services Total</b>	<b>28</b>	<b>58</b>	<b>46</b>	<b>8.1%</b>	<b>19.9%</b>	<b>16.3%</b>

<b>College</b>	<b>Ethnicity</b>	<b>2007</b>	<b>2006</b>	<b>2005</b>	<b>2007</b>	<b>2006</b>	<b>2005</b>
<i>Nursing</i>	American Indian/Alaskan Native	0	0	n/a	0.0%	0.0%	n/a
	Asian or Pacific Islander	2	0	n/a	0.6%	0.0%	n/a





**Table 3.7**  
**New Adult Students**  
**Enrollment by Credit Hour Load Status**  
**Fall 2005-07**

Credit Hour Load Status	Count			Percent of Total		
	2007	2006	2005	2007	2006	2005
Full-time	204	207	190	58.8%	70.9%	67.1%
Part-time	143	85	93	41.2%	29.1%	32.9%
<b>Grand Total</b>	<b>347</b>	<b>292</b>	<b>283</b>	<b>100.0%</b>	<b>100.0%</b>	<b>100.0%</b>

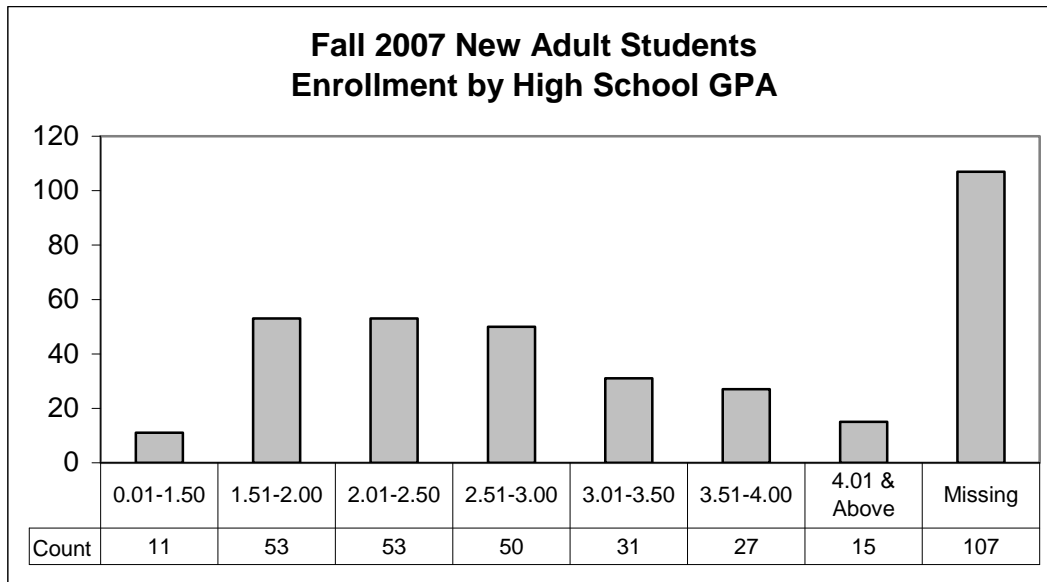
Source: Institutional Analysis System (IAS): 2007.

**Table and Figure 3.8  
New Adult Students  
Enrollment by High School GPA  
Fall 2005-07**

High School GPA	Count			Percent of Total		
	2007	2006	2005	2007	2006	2005
0.01-1.50	11	13	12	3.2%	4.5%	4.2%
1.51-2.00	53	37	37	15.3%	12.7%	13.1%
2.01-2.50	53	53	41	15.3%	18.2%	14.5%
2.51-3.00	50	36	43	14.4%	12.3%	15.2%
3.01-3.50	31	24	29	8.9%	8.2%	10.2%
3.51-4.00	27	14	15	7.8%	4.8%	5.3%
4.01 & Above	15	2	2	4.3%	0.7%	0.7%
Missing	107	113	104	30.8%	38.7%	36.7%
<b>Grand Total</b>	<b>347</b>	<b>292</b>	<b>283</b>	<b>100.0%</b>	<b>100.0%</b>	<b>100.0%</b>

Source: Institutional Analysis System (IAS): 2007.

	<u>2007</u>	<u>2006</u>	<u>2005</u>
<i>Average High School GPA</i>	<b>2.64</b>	<b>2.46</b>	<b>2.52</b>



**Table 3.9**  
**New Adult Students**  
**Enrollment by Residency**  
**Fall 2005-07**

<b>Residency</b>	<b>Count</b>			<b>Percent of Total</b>		
	<b>2007</b>	<b>2006</b>	<b>2005</b>	<b>2007</b>	<b>2006</b>	<b>2005</b>
Resident	323	264	258	93.1%	90.4%	91.2%
Resident - MI Reciprocity	14	12	11	4.0%	4.1%	3.9%
Non-Resident	10	16	14	2.9%	5.5%	4.9%
<b>Grand Total</b>	<b>347</b>	<b>292</b>	<b>283</b>	<b>100.0%</b>	<b>100.0%</b>	<b>100.0%</b>

**Source:** Institutional Analysis System (IAS): 2007.

## **New Transfer Students**

**Includes:** New students who enrolled at the University of Toledo with transfer credits earned at another regionally accredited college or university beyond high school.

**Note:** This category does not include any international students.

**Table 4.1**

<b>Transfer Category</b>	<b>2007</b>	<b>2006</b>	<b>2005</b>	<b>2007</b>	<b>2006</b>	<b>2005</b>
New Transfer	1,028	1,019	855	84.4%	85.2%	82.4%
Transfer Readmit	179	174	178	14.7%	14.5%	17.1%
Transient	11	3	5	0.9%	0.3%	0.5%

**Table 4.2**

<b>College</b>	<b>Applied</b>	<b>Admitted</b>	<b>Enrolled</b>	<b>Enrolled Yield</b>
Arts & Sciences			391	

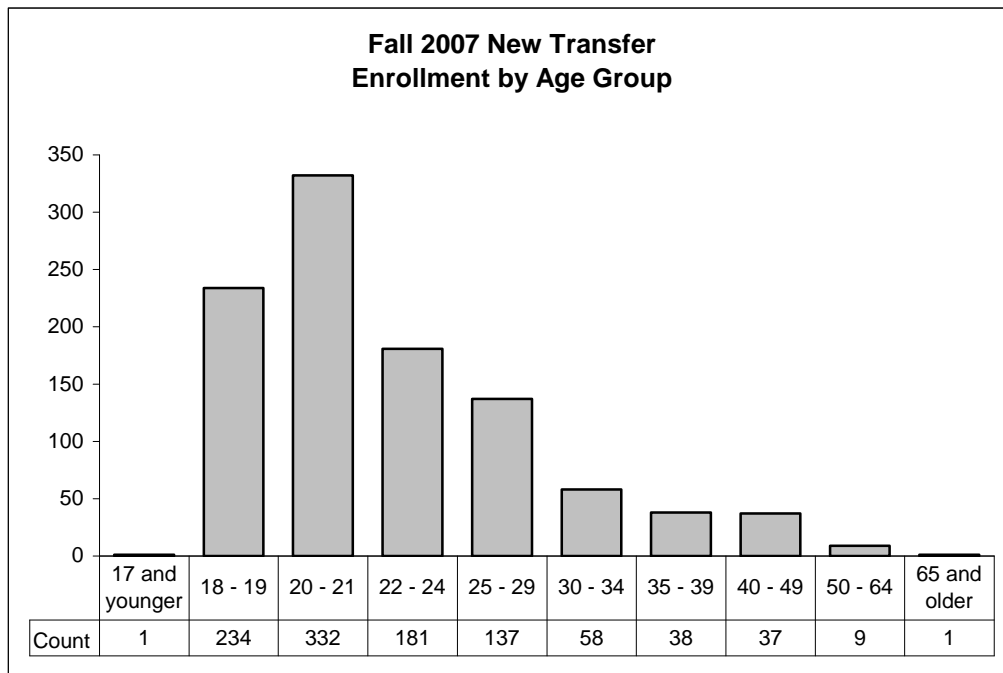




**Table and Figure 4.4**  
**New Transfer**  
**Enrollment by Age Group**  
**Fall 2005-07**

Age group	Count			Percent of Total		
	2007	2006	2005	2007	2006	2005
17 and younger	1	1	1	0.1%	0.1%	0.1%
18 - 19	234	217	190	22.8%	21.3%	22.2%
20 - 21	332	343	267	32.3%	33.7%	31.2%
22 - 24	181	193	180	17.6%	18.9%	21.1%
25 - 29	137	124	100	13.3%	12.2%	11.7%
30 - 34	58	52	51	5.6%	5.1%	6.0%
35 - 39	38	33	22	3.7%	3.2%	2.6%
40 - 49	37	36	35	3.6%	3.5%	4.1%
50 - 64	9	20	8	0.9%	2.0%	0.9%
65 and older	1	0	1	0.1%	0.0%	0.1%
<b>Grand Total</b>	<b>1,028</b>	<b>1,019</b>	<b>855</b>	<b>100.0%</b>	<b>100.0%</b>	<b>100.0%</b>

Source: Institutional Analysis System (IAS): 2007.



**Table and Figure 4.5**  
**New Transfer**  
**Enrollment by College**  
**Fall 2005-07**

College	Count			Percent of Total		
	2007	2006	2005	2007	2006	2005
University College	182	193	158	17.7%	18.9%	18.5%
Arts & Sciences	174	202	168	16.9%	19.8%	19.6%
Business	154	137	115	15.0%	13.4%	13.5%
Health & Human Services	138	178	134	13.4%	17.5%	15.7%
Engineering	103	127	95	10.0%	12.5%	11.1%
Student Success Center	82	38	42	8.0%	3.7%	4.9%
Nursing	79	5	n/a	7.7%	0.5%	n/a
Education	69	82	87	6.7%	8.0%	10.2%
Pharmacy	47	57	56	4.6%	5.6%	6.5%
<b>Grand Total</b>	<b>1,028</b>	<b>1,019</b>	<b>855</b>	<b>100.0%</b>	<b>100.0%</b>	<b>100.0%</b>

**Source:** Institutional Analysis System (IAS): 2007.

**Table 4.6**  
**New Transfer**  
**Enrollment by College and Ethnicity**  
**Fall 2005-07**

College	Ethnicity	Count			Percent of Total		
		2007	2006	2005	2007	2006	2005
<i>Arts &amp; Sciences</i>	American Indian/Alaskan Native	0	1	1	0.0%	0.1%	0.1%
	Asian or Pacific Islander	3	6	0	0.3%	0.6%	0.0%
	Black, not of Hispanic Origin	16	13	16	1.6%	1.3%	1.9%
	Non-resident Alien	0	0	0	0.0%	0.0%	0.0%
	Not Specified	11	13	12	1.1%	1.3%	1.4%
	Other Hispanic Americans	9	7	4	0.9%	0.7%	0.5%
	White, not of Hispanic origin	135	162	135	13.1%	15.9%	15.8%
	<b>Arts &amp; Sciences Total</b>	<b>174</b>	<b>202</b>	<b>168</b>	<b>16.9%</b>	<b>19.8%</b>	<b>19.6%</b>
<i>Business</i>	American Indian/Alaskan Native	0	1	0	0.0%	0.1%	0.0%
	Asian or Pacific Islander	1	3	4	0.1%	0.3%	0.5%
	Black, not of Hispanic Origin	8	11	10	0.8%	1.1%	1.2%
	Non-resident Alien	0	0	0	0.0%	0.0%	0.0%
	Not Specified	7	5	5	0.7%	0.5%	0.6%
	Other Hispanic Americans	4	7	3	0.4%	0.7%	0.4%
	White, not of Hispanic origin	134	110	93	13.0%	10.8%	10.9%
	<b>Business Total</b>	<b>154</b>	<b>137</b>	<b>115</b>	<b>15.0%</b>	<b>13.4%</b>	<b>13.5%</b>
<i>Education</i>	American Indian/Alaskan Native	0	0	0	0.0%	0.0%	0.0%
	Asian or Pacific Islander	0	0	0	0.0%	0.0%	0.0%
	Black, not of Hispanic Origin	2	1	4	0.2%	0.1%	0.5%
	Non-resident Alien	0	0	0	0.0%	0.0%	0.0%
	Not Specified	1	7	7	0.1%	0.7%	0.8%
	Other Hispanic Americans	2	3	3	0.2%	0.3%	0.4%
	White, not of Hispanic origin	64	71	73	6.2%	7.0%	8.5%
	<b>Education Total</b>	<b>69</b>	<b>82</b>	<b>87</b>	<b>6.7%</b>	<b>8.0%</b>	<b>10.2%</b>
<i>Engineering</i>	American Indian/Alaskan Native	0	1	0	0.0%	0.1%	0.0%
	Asian or Pacific Islander	3	4	4	0.3%	0.4%	0.5%
	Black, not of Hispanic Origin	3	7	2	0.3%	0.7%	0.2%
	Non-resident Alien	0	0	0	0.0%	0.0%	0.0%
	Not Specified	10	11	8	1.0%	1.1%	0.9%
	Other Hispanic Americans	4	3	2	0.4%	0.3%	0.2%
	White, not of Hispanic origin	83	101	79	8.1%	9.9%	9.2%
	<b>Engineering Total</b>	<b>103</b>	<b>127</b>	<b>95</b>	<b>10.0%</b>	<b>12.5%</b>	<b>11.1%</b>
<i>Health &amp; Human Services</i>	American Indian/Alaskan Native	1	0	0	0.1%	0.0%	0.0%
	Asian or Pacific Islander	6	3	2	0.6%	0.3%	0.2%
	Black, not of Hispanic Origin	16	22	25	1.6%	2.2%	2.9%
	Non-resident Alien	0	0	0	0.0%	0.0%	0.0%
	Not Specified	6	14	7	0.6%	1.4%	0.8%
	Other Hispanic Americans	1	5	4	0.1%	0.5%	0.5%
	White, not of Hispanic origin	108	134	96	10.5%	13.2%	11.2%
	<b>Health &amp; Human Services Total</b>	<b>138</b>	<b>178</b>	<b>134</b>	<b>13.4%</b>	<b>17.5%</b>	<b>15.7%</b>

<b>College</b>	<b>Ethnicity</b>	<b>2007</b>	<b>2006</b>	<b>2005</b>	<b>2007</b>	<b>2006</b>	<b>2005</b>
<i>Nursing</i>	American Indian/Alaskan Native	0	0	n/a	0.0%	0.0%	n/a
	Asian or Pacific Islander	1	0	n/a	0.1%	0.0%	n/a
	Black, not of Hispanic Origin	8	0	n/a	0.8%	0.0%	n/a
	Non-resident Alien	0	0	n/a	0.0%	0.0%	n/a
	Not Specified	2	1	n/a	0.2%	0.1%	n/a
	Other Hispanic Americans	2	0	n/a	0.2%	0.0%	n/a
	White, not of Hispanic origin	66	4	n/a	6.4%	0.4%	n/a
		<b>79</b>	<b>5</b>	<b>n/a</b>	<b>7.7%</b>	<b>0.5%</b>	<b>n/a</b>
<i>Pharmacy</i>	American Indian/Alaskan Native	0	0	0	0.0%	0.0%	0.0%
	Asian or Pacific Islander	6	9	8	0.6%	0.9%	0.9%

**2005**

- 14.0%
- 5.6%
- 6.5%
- 3.2%
- 1.5%
- 2.8%
- 3.0%
- 2.6%
- 1.5%
- 2.6%
- 2.0%
- 1.2%
- 1.5%
- 2.7%
- 1.6%
- 0.7%
- 2.1%
- 3.5%
- 2.0%
- 0.8%
- 1.1%
- 0.9%
- 2.0%
- 1.1%
- 2.0%
- 1.6%
- 0.9%

**Table 4.8**  
**New Transfer**  
**Enrollment by Credit Hour Load Status**  
**Fall 2005-07**

<b>Credit Hour Load Status</b>	<b>Count</b>			<b>Percent of Total</b>		
	<b>2007</b>	<b>2006</b>	<b>2005</b>	<b>2007</b>	<b>2006</b>	<b>2005</b>
Full-time	789	781	654	76.8%	76.6%	76.5%
Part-time	239	238	201	23.2%	23.4%	23.5%
<b>Grand Total</b>	<b>1,028</b>	<b>1,019</b>	<b>855</b>	<b>100.0%</b>	<b>100.0%</b>	<b>100.0%</b>

**Source:** Institutional Analysis System (IAS): 2007.

**Table and Figure 4.9**  
**New Transfer**  
**Cumulative Transfer GPA**  
**Fall 2005-07**

Cumulative Transfer GPA	Count			Percent of Total		
	2007	2006	2005	2007	2006	2005
0.01 - 1.50	72	61	58	7.0%	6.0%	6.8%
1.51 - 2.00	77	87	75	7.5%	8.5%	8.8%
2.01 - 2.50	174	147	127	16.9%	14.4%	14.9%
2.51 - 3.00	204	218	152	19.8%	21.4%	17.8%
3.01 - 3.50	205	198	168	19.9%	19.4%	19.6%
3.51 - 4.00	187	192	176	18.2%	18.8%	20.6%
Missing	109	116	99	10.6%	11.4%	11.6%
<b>Grand Total</b>	<b>1,028</b>	<b>1,019</b>	<b>855</b>	<b>100.0%</b>	<b>100.0%</b>	<b>100.0%</b>

Source: Institutional Analysis System (IAS): 2007.

	<u>2007</u>	<u>2006</u>	<u>2005</u>
<b>Average Cumulative Transfer GPA</b>	<b>2.77</b>	<b>2.80</b>	<b>2.80</b>

**Table and Figure 4.10**  
**New Transfer**  
**Cumulative Transfer Hours**  
**Fall 2005-07**

Cumulative Transfer Hours	Cumulative Transfer Hours			Percent of Total		
	2007	2006	2005	2007	2006	2005
Below 10	85	67	75	8.3%	6.6%	8.8%
10 - 19.99	101	116	115	9.8%	11.4%	13.5%
20 - 29.99	153	140	117	14.9%	13.7%	13.7%
30 - 39.99	145	113	98	14.1%	11.1%	11.5%
40 - 49.99	90	93	79	8.8%	9.1%	9.2%
50 - 59.99	99	114	77	9.6%	11.2%	9.0%
60 - 69.99	99	104	93	9.6%	10.2%	10.9%
70 - 79.99	77	77	51	7.5%	7.6%	6.0%
80 - 89.99	43	46	33	4.2%	4.5%	3.9%
90 - 99.99	23	19	21	2.2%	1.9%	2.5%
100+	23	27	18	2.2%	2.6%	2.1%
Missing	90	103	78	8.8%	10.1%	9.1%
<b>Grand Total</b>	<b>1,028</b>	<b>1,019</b>	<b>855</b>	<b>100.0%</b>	<b>100.0%</b>	<b>100.0%</b>

Source: Institutional Analysis System (IAS): 2007.

	<u>2007</u>	<u>2006</u>	<u>2005</u>
<b>Average Hours Transferred</b>	<b>43.22</b>	<b>44.57</b>	<b>42.05</b>



**Table and Figure 4.11**

<b>Transfer</b>						
<b>Institution Type</b>	<b>2007</b>	<b>2006</b>	<b>2005</b>	<b>2007</b>	<b>2006</b>	<b>2005</b>
Ohio, 4-year Public	127	139	112	12.4%	13.6%	13.1%
Ohio, 2-year Public	367	359	309	35.7%	35.2%	36.1%
Ohio, Private	95	52	58	9.2%	5.1%	6.8%
Michigan, all	130	144	97	12.6%	14.1%	11.3%
Out-of-state	75	97	77	7.3%	9.5%	9.0%
International	5	3	4	0.5%	0.3%	0.5%
Unknown	229	225	198	22.3%	22.1%	23.2%
<b>Grand Total</b>						

**Table 4.12**  
**New Transfer**  
**4-year Transfer Institutions (Public) with 2 or more Students in Fall 2007**  
**Fall 2005-07**

Transfer Institution	Count			Percent of Total		
	2007	2006	2005	2007	2006	2005
BOWLING GREEN STATE UNIVERSITY	41	37	21	22.8%	18.0%	12.7%
KENT STATE UNIVERSITY	17	18	12	9.4%	8.8%	7.3%
OHIO STATE UNIVERSITY	14	25	30	7.8%	12.2%	18.2%
UNIVERSITY OF CINCINNATI	13	12	7	7.2%	5.9%	4.2%
UNIV OF AKRON MAIN CAMPUS	9	6	6	5.0%	2.9%	3.6%
EASTERN MICHIGAN UNIVERSITY	8	14	4	4.4%	6.8%	2.4%
MIAMI UNIVERSITY MAIN CAM	8	2	8	4.4%	1.0%	4.8%
WRIGHT ST U MAIN CAMPUS	7	7	4	3.9%	3.4%	2.4%
YOUNGSTOWN STATE UNIVERSITY	6	8	4	3.3%	3.9%	2.4%
CLEVELAND STATE UNIVERSITY	5	8	7	2.8%	3.9%	4.2%
MICHIGAN STATE UNIVERSITY	5	3	2	2.8%	1.5%	1.2%
OHIO UNIVERSITY MAIN CAMPUS	5	13	9	2.8%	6.3%	5.5%
GRAND VALLEY ST UNIVERSITY	3	1	1	1.7%	0.5%	0.6%
PURDUE U ALL CAMPUSES	3	3	1	1.7%	1.5%	0.6%
THE UNIVERSITY OF PHOENIX	3	0	0	1.7%	0.0%	0.0%
ARIZONA STATE UNIVERSITY	2	0	0	1.1%	0.0%	0.0%
FLORIDA ATLANTIC UNIVERSITY	2	0	0	1.1%	0.0%	0.0%
INDIANA U PURDUE U INDIANAPOLIS	2	0	0	1.1%	0.0%	0.0%
WAYNE STATE UNIVERSITY	2	3	0	1.1%	1.5%	0.0%
All other 4-year public colleges combined	25	45	49	13.9%	22.0%	29.7%
<b>Grand Total</b>	<b>180</b>	<b>205</b>	<b>165</b>	<b>100.0%</b>	<b>100.0%</b>	<b>100.0%</b>

**Source:** Institutional Analysis System (IAS): 2007.

**Note:** The Transfer Institution is of the most recent transfer institution attended. If the student has attended more than one institution at the same time, then institution with the most earned hours is used.

**Table 4.13**

<b>Transfer Institution</b>	<b>2007</b>	<b>2006</b>	<b>2005</b>	<b>2007</b>	<b>2006</b>	<b>2005</b>
Owens Community College	205	210	166	42.4%	42.0%	40.5%
Monroe County Community College	78	90	57	16.1%	18.0%	13.9%
Lorain County Community College	33	31	32	6.8%	6.2%	7.8%
Cuyahoga Community College	28	37	35	5.8%	7.4%	8.5%
Northwest State Comm College	23	19	23	4.8%	3.8%	5.6%
Terra Community College	18	15	12	3.7%	3.0%	2.9%
Columbus State Community College	11	7	10	2.3%	1.4%	2.4%
Lakeland Community College	11	8	10	2.3%	1.6%	2.4%
JAMES A RHODES STATE COLLEGE	9	7	1	1.9%	1.4%	0.2%
SINCLAIR COMMUNITY COLLEGE	9	9	6	1.9%	1.8%	1.5%
North Central State College	5	5	7	1.0%	1.0%	1.7%
Stark State College of Tech	5	3	2	1.0%	0.6%	0.5%
Edison State Community College	4	3	2	0.8%	0.6%	0.5%
JACKSON COMMUNITY COLLEGE	4	3	2	0.8%	0.6%	0.5%
Henry Ford Community College	3	4	2	0.6%	0.8%	0.5%

**Table 4.14**  
**New Transfer**  
**Enrollment by Residency Status**  
**Fall 2005-07**

<b>Residency Status</b>	<b>Count</b>			<b>Percent of Total</b>		
	<b>2007</b>	<b>2006</b>	<b>2005</b>	<b>2007</b>	<b>2006</b>	<b>2005</b>
Resident	818	807	706	79.6%	79.2%	82.6%
Resident - MI Reciprocity	112	128	79	10.9%	12.6%	9.2%
Non-Resident	98	84	70	9.5%	8.2%	8.2%
<b>Grand Total</b>	<b>1,028</b>	<b>1,019</b>	<b>855</b>	<b>100.0%</b>	<b>100.0%</b>	<b>100.0%</b>

**Source:** Institutional Analysis System (IAS): 2007.

# **New International Students**

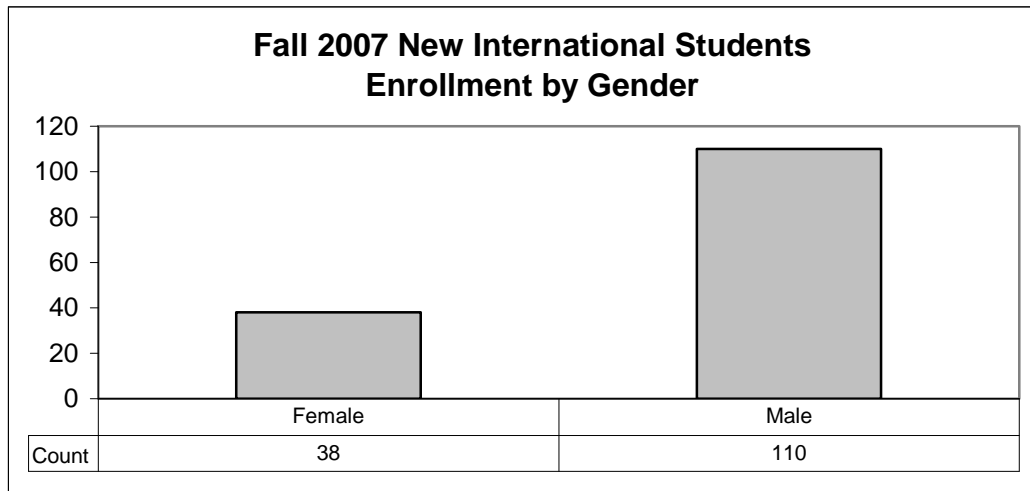
**Table 5.1**

<b>College</b>	<b>Applied</b>	<b>Admitted</b>	<b>Enrolled</b>	<b>Enrolled Yield</b>
----------------	----------------	-----------------	-----------------	-----------------------

**Table and Figure 5.2**  
**New International Students**  
**Enrollment by Gender**  
**Fall 2005-07**

Gender	Count			Percent of Total		
	2007	2006	2005	2007	2006	2005
Female	38	36	24	25.7%	31.0%	37.5%
Male	110	80	40	74.3%	69.0%	62.5%
<b>Grand Total</b>	<b>148</b>	<b>116</b>	<b>64</b>	<b>100.0%</b>	<b>100.0%</b>	<b>100.0%</b>

Source: Institutional Analysis System (IAS): 2007.



**Table and Figure 5.3**

<b>Age Group</b>	<b>2007</b>	<b>2006</b>	<b>2005</b>	<b>2007</b>	<b>2006</b>	<b>2005</b>
------------------	-------------	-------------	-------------	-------------	-------------	-------------



**Table and Figure 5.4**

<b>College</b>	<b>2007</b>	<b>2006</b>	<b>2005</b>	<b>2007</b>	<b>2006</b>	<b>2005</b>
Engineering	57	51	25	38.5%	44.0%	39.1%
Business	31	22	6	20.9%	19.0%	9.4%
Pharmacy	21	8	6	14.2%	6.9%	9.4%
Health & Human Services	17	7	4	11.5%	6.0%	6.3%
Arts & Sciences	9	18	14	6.1%	15.5%	21.9%
Student Success Center	6	6	7	4.1%	5.2%	10.9%
Education	3	1	1	2.0%	0.9%	1.6%
Nursing	3	0	n/a	2.0%	0.0%	n/a
University College	1	3	1	0.7%	2.6%	1.6%
Concurrent College	0	0	0	0.0%	0.0%	0.0%
<b>Grand Total</b>	<b>148</b>	<b>116</b>	<b>64</b>	<b>100.0%</b>	<b>100.0%</b>	<b>100.0%</b>

**Source:**

**Table 5.5**  
**New International Students**  
**Enrollment by Major with 2 or more Students in Fall 2007**  
**Fall 2005-07**

Major	Count			Percent of Total		
	2007	2006	2005	2007	2006	2005
Pre-Pharmacy	21	8	6	14.2%	6.9%	9.4%
Electrical Engineering Technology	15	18	6	10.1%	15.5%	9.4%
Pre-Respiratory Care	13	3	1	8.8%	2.6%	1.6%
Mechanical Engineering Technology	10	8	5	6.8%	6.9%	7.8%
Pre-Accounting	10	3	1	6.8%	2.6%	1.6%
Computer Science and Engineering Technol	9	7	3	6.1%	6.0%	4.7%
Chemical Engineering	7	7	4	4.7%	6.0%	6.3%
Pre-Business	6	6	0	4.1%	5.2%	0.0%
Pre-International Business	5	1	0	3.4%	0.9%	0.0%
Special, Undeclared	4	2	2	2.7%	1.7%	3.1%
Biology	4	7	7	2.7%	6.0%	10.9%
Mechanical Engineering	4	2	0	2.7%	1.7%	0.0%
Pre-Finance	4	3	0	2.7%	2.6%	0.0%
Computer Science and Engineering	4	1	1	2.7%	0.9%	1.6%
Exercise Science	3	1	1	2.0%	0.9%	1.6%
Electrical Engineering	3	5	1	2.0%	4.3%	1.6%
Pre-Electronic Commerce	3	0	0	2.0%	0.0%	0.0%
Undecided	2	7	10	1.4%	6.0%	15.6%
Communication	2	2	0	1.4%	1.7%	0.0%
Multi-Age Education (Pre K-12)	2	0	0	1.4%	0.0%	0.0%
Nursing	2	0	0	1.4%	0.0%	0.0%
All Others Combined	15	25	16	10.1%	21.6%	25.0%
<b>Grand Total</b>	<b>148</b>	<b>116</b>	<b>64</b>	<b>100.0%</b>	<b>100.0%</b>	<b>100.0%</b>

Source: Institutional Analysis System (IAS): 2007.

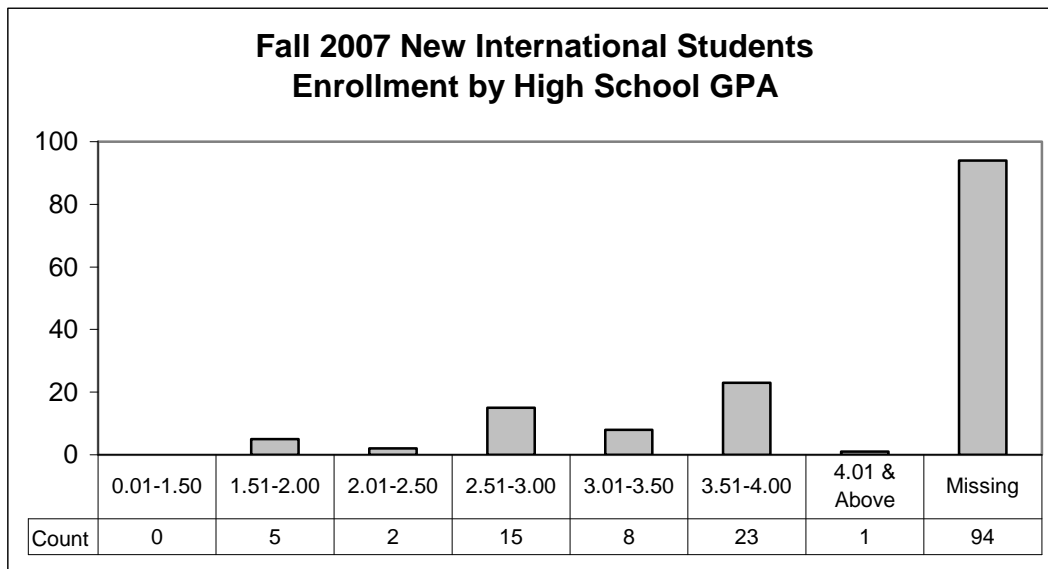
**Table 5.6**

**Table and Figure 5.7  
New International Students  
Enrollment by High School GPA  
Fall 2005-07**

High School GPA	Count			Percent of Total		
	2007	2006	2005	2007	2006	2005
0.01-1.50	0	0	0	0.0%	0.0%	0.0%
1.51-2.00	5	4	4	3.4%	3.4%	6.3%
2.01-2.50	2	3	1	1.4%	2.6%	1.6%
2.51-3.00	15	10	3	10.1%	8.6%	4.7%
3.01-3.50	8	7	5	5.4%	6.0%	7.8%
3.51-4.00	23	7	5	15.5%	6.0%	7.8%
4.01 & Above	1	0	1	0.7%	0.0%	1.6%
Missing	94	85	45	63.5%	73.3%	70.3%
<b>Grand Total</b>	<b>148</b>	<b>116</b>	<b>64</b>	<b>100.0%</b>	<b>100.0%</b>	<b>100.0%</b>

Source: Institutional Analysis System (IAS): 2007.

	<u>2007</u>	<u>2006</u>	<u>2005</u>
<i>Average High School GPA</i>	<b>3.33</b>	<b>2.95</b>	<b>3.05</b>





# Retention

## Summary

**Based on Recent Changes to IPEDS definitions of First-Time, Full-Time, Baccalaureate-Degree-Seeking students, we have made retroactive adjustments to fall cohort sizes, retention rates, and graduation rates in this report. Graduation rates are cumulative.**

### University Average

- Ø Retention decreased 1.4% from 69.7% to 68.3%
- Ø Overall, slightly fewer students graduated, but those who did, graduated in less time:
  - 6-year graduation rate declined 0.4% from 45.9% last year to 44.5%,
  - 5-year graduation rates have risen from 37.9% for the 1999 cohort to 42.5% for the 2002 cohort
  - 4-year graduation rates have risen from 15.6% for the 1998 cohort to 22.6% for the 2003 cohort

### Colleges

#### Arts & Sciences

- Ø Retention decreased 6.3% from 67.1% to 60.8%
- Ø Consistent with the overall trend, the 6-year graduation rate declined while 4- and 5-year graduation rates have been on the increase
  - 6-year graduation rate declined 2.2% from 42.6% to 40.4%
  - 5-year graduation rate increased 1.7% from 36.2% to 37.9%
  - 4-year graduation rate increased 0.1% from 23.9% to 24.0%
- Ø 47.4% of students who began in Arts & Sciences in 2006 returned to Arts & Sciences in 2007, down 5.8% from 53.2% the previous year
  - 3.7% returned to Health

**Education**

- Ø Retention increased 3.6% from 66.2% to 69.8%
- Ø 6-year graduation rate declined 1.7% from 41.6% to 39.9%
- Ø 5-year graduation rate increased 10.0% from 33.0% to 43.0%
- Ø 4-year graduation rate declined 1.2% from 19.2% to 18.0% but has generally been on the rise since 1998 (13.9%)
- Ø 62.9% of students who began in Education in 2006 returned to Education in 2007, up 3.7% from 59.2% the previous year
  - 2.6% returned to Business
  - 2.2% returned to Arts & Sciences

**Engineering**

- Ø Retention decreased 1.6% from 81.0% to 79.4%
- Ø Engineering has the highest one-year retention rate and graduates the largest percentage of students
- Ø As with most colleges, the 6-year graduation rate declined while 4- and 5-year graduation rates increased
  - 6-year graduation rate declined 2.2% from 62.4% to 60.2%
  - 5-year graduation rate increased 2.6% from 56.8% to 59.4%
  - 4-year graduation rate increased 4.0% from 14.7% to 18.7%
- Ø 66.2% of students who began in Engineering in 2006 returned to Engineering in 2007, a decline of 3.2% from 69.4% the previous year

**Health Science & Human Services**

- Ø Retention increased 0.1% from 67.7% to 67.8%
- Ø 6-year graduation rate declined 1.0% from 46.0% to 45.0%
- Ø 5-year graduation rate increased 2.4% from 40.4% to 42.8%
- Ø 4-year graduation rate declined 5.2% from 32.1% to 26.9%

**Pharmacy**

- Ø Retention decreased 0.1% from 78.1% to 78.0%
- Ø Although 4- and 5-year graduation rates declined, Pharmacy is the only college that experienced an increase in its 6-year graduation rate
  - 6-year graduation rate increased 0.4% from 57.5% to 57.9%
  - 5-year graduation rate declined 5.0% from 52.3% to 47.3%
  - 4-year graduation rate declined 2.4% from 30.8% to 28.4%
- Ø 55.3% of students who began in Pharmacy in 2006 returned to Pharmacy in 2007, an increase of 4.8% from 50.5% the previous year
  - 6.1% returned to University College
  - 4.2% returned to Health Science & Human Services
  - 4.2% returned to Business



### **University College**

- Ø Retention decreased 5.6% from 61.0% to 55.4%
- Ø 6-year graduation rate declined 0.6% from 34.4% to 33.8%
- Ø 5-year graduation rate declined 0.5% from 30.6% to 30.1%
- Ø 4-year graduation rate increased 0.2% from 13.9% to 14.1%
- Ø 23.9% of students who began in University College in 2006 returned to University College in 2007, a decrease of 3.5% from 27.4% the previous year
  - 8.6% returned to Business
  - 5.3% returned to Arts & Sciences
  - 5.3% returned to Engineering
  - 5.3% returned to Health Science & Human Services

### **Gender**

#### **Females**

- Ø Retention and graduation rates are slightly but consistently higher for females than for males
- Ø Retention declined 1.2% from 70.6% to 69.4%
- Ø 6-year graduation rate declined 2.5% from 47.9% to 45.4%

#### **Males**

- Ø Retention declined 1.4% from 68.8% to 67.4%
- Ø 6-year graduation rate declined 0.4% from 44.0% to 43.6%

### **Ethnicity**

#### **African-American Students**

- Ø Retention and graduation rates for African-American students remain 68(a)-1(in )-18o -1.7T((caGT

### Hispanic Students

- Ø Retention increased 2.2% from 63.8% to 66.0%
  - For females, retention increased 4.7% from 60.5% to 65.2%
  - For males, retention decreased 0.9% from 67.6% to 66.7%
- Ø 6-year graduation rate increased 5.4% from 28.4% to 33.8%
  - For females, the 6-year graduation rate increased 4.4% from 26.2% to 30.6%
  -

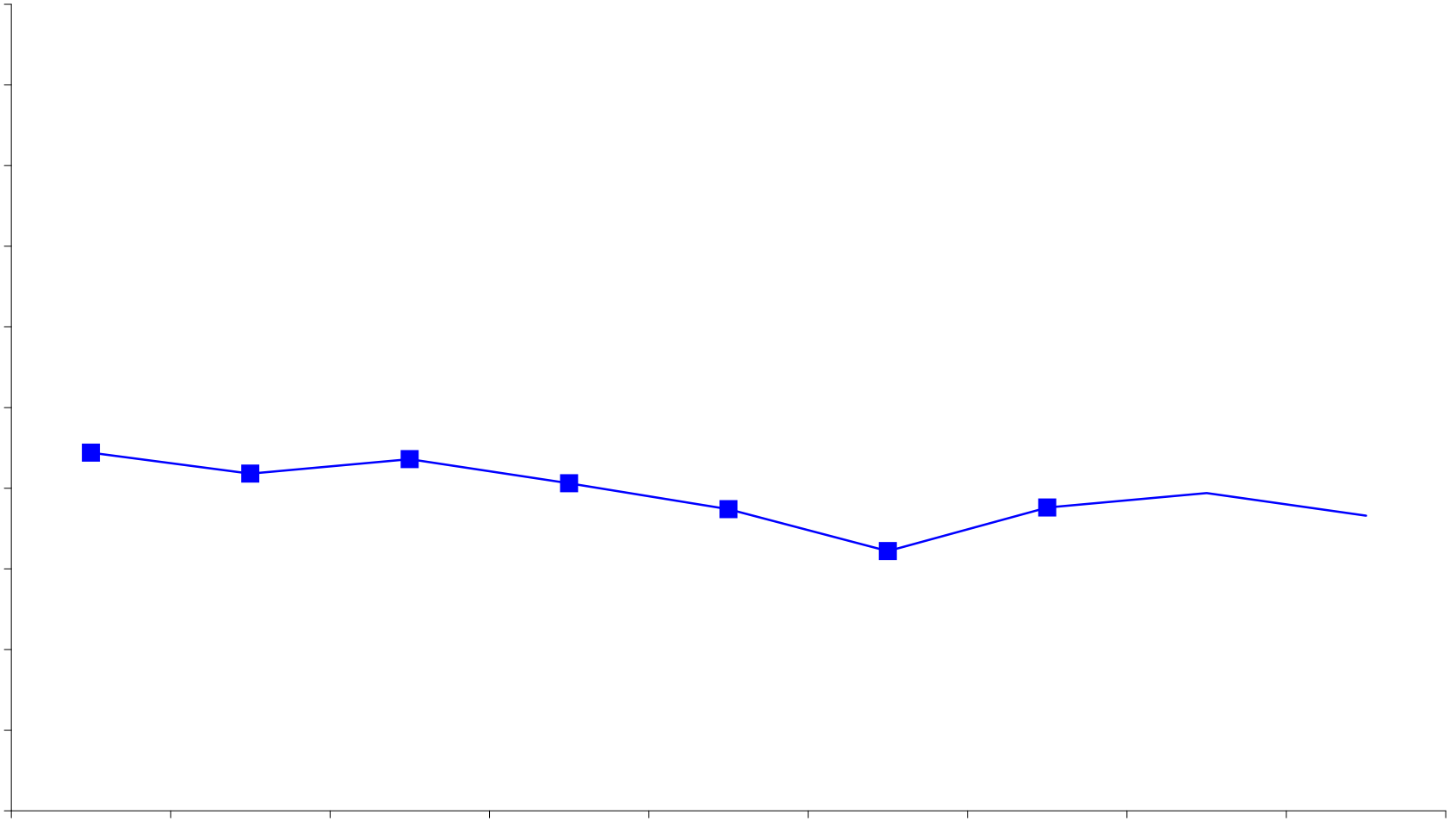
## **ACT Score**

- ∅ The higher students' ACT score, the more likely they are to return for a second year and the more likely they are to graduate
  - An average of 83.6% of students with an ACT score of 25 or higher return for a second year compared with only 58.8% of students with a score of 18 or below
  - 69.7% of students with an ACT score of 25 or higher graduate within 6 years compared with only 31.7% of students with a score of 18 or below

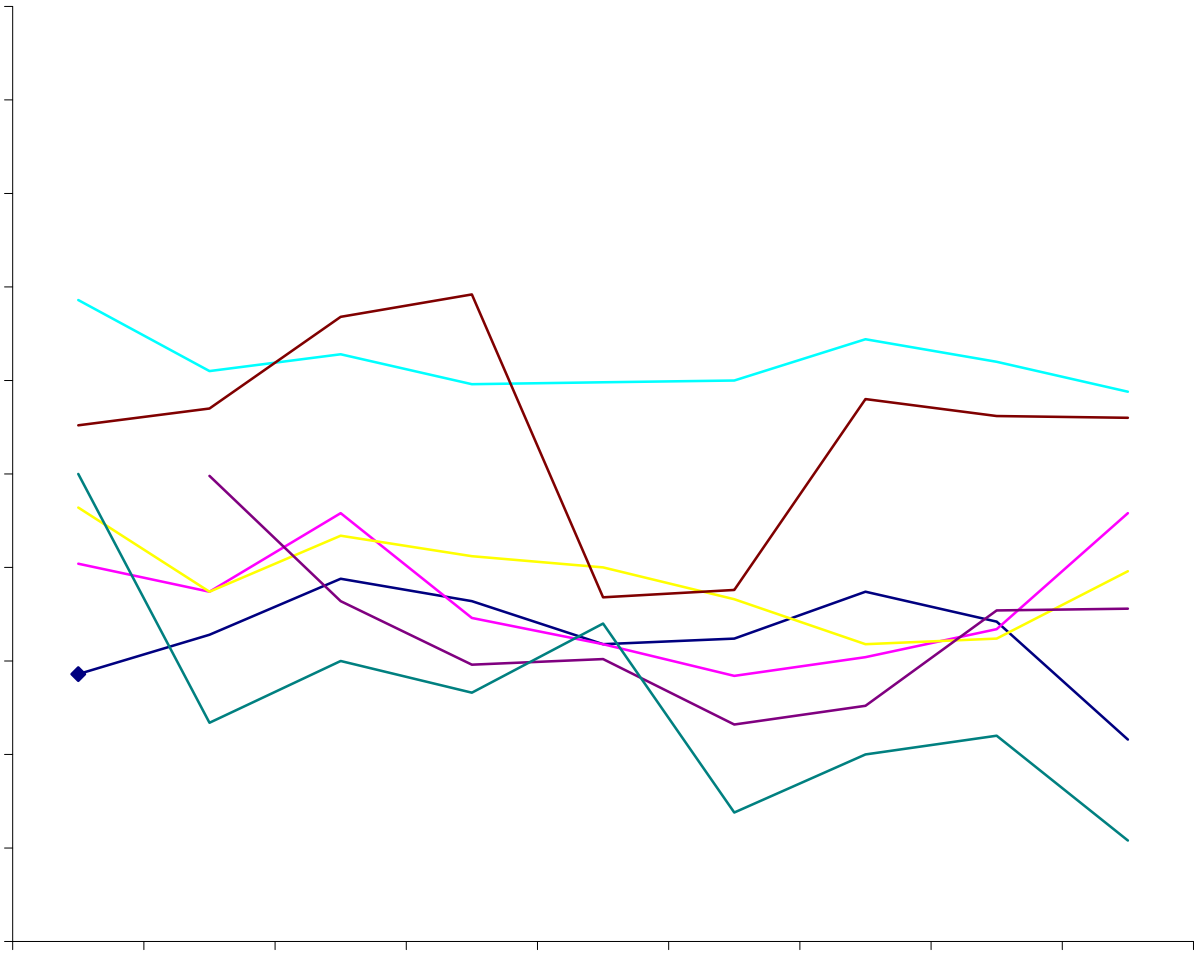
## **High School GPA**

- ∅ The higher students' high school GPA, the more likely they are to return for a second year and the more likely they are to graduate
  - An average of 92.9% of students with a high school GPA greater than 4.0 return for a second year compared with only 35.0% of students with a high school GPA of 1.0-1.5
  - 89.7% of students with a high school GPA of greater than 4.0 graduate within six years compared with only 5.7% of students with a high school GPA of 1.0-1.5







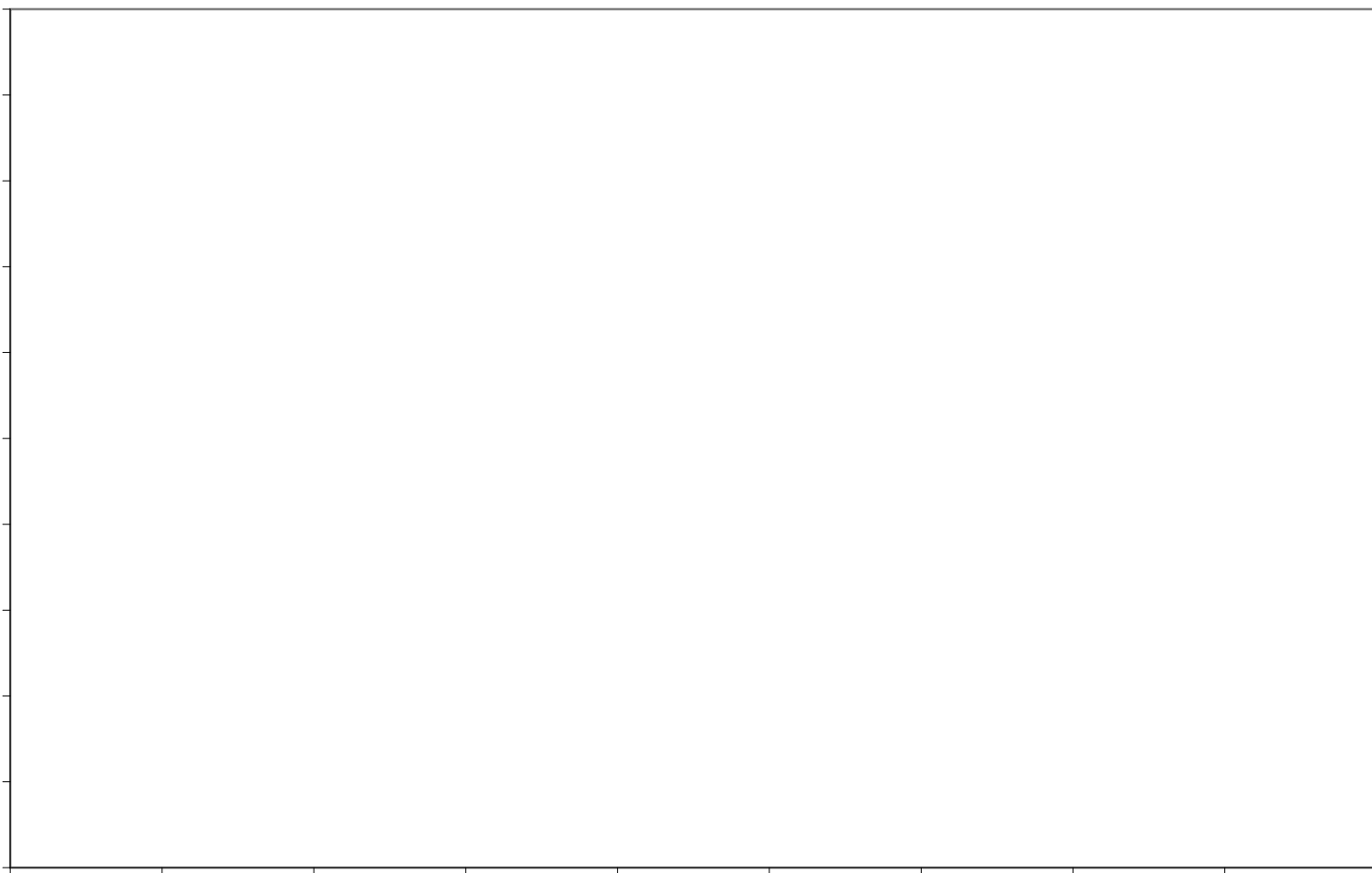


Initial College Arts & Sciences	Cohort AY 2007	Initial Cohort Size 7	Arts & Sciences	Business	Education	Engineering	Health Science & Human Services	Nursing	Pharmacy	University College
------------------------------------	-------------------	-----------------------------	-----------------	----------	-----------	-------------	------------------------------------	---------	----------	-----------------------



**University Return and Graduation Rates for First-Time, Full-Time,  
Baccalaureate-Degree-Seeking Students by Gender  
Fall Entry Cohorts: 1998 - 2007**

	First Fall Term	Initial Cohort Size	One-Year Return Rate	Graduated within:		
				4 years	5 years	6 years
Female	2007	1,772				
	2006	1,504	69.4%			
	2005	1,478	70.6%			
	2004	1,488	69.7%			
	2003	1,702	67.1%	26.1%		
	2002	1,778	69.3%	28.4%	46.1%	
	2001	1,637	71.8%	25.5%	41.3%	45.4%
	2000	1,613	73.2%	26.7%	44.0%	47.9%
	1999	1,414	71.4%	20.8%	38.8%	44.4%
	1998	1,201	72.7%	19.8%	40.7%	46.4%



**University Return and Graduation Rates for First-Time, Full-Time,  
Baccalaureate-Degree-Seeking Students by Ethnicity  
Fall Entry Cohorts: 1998 - 2007**

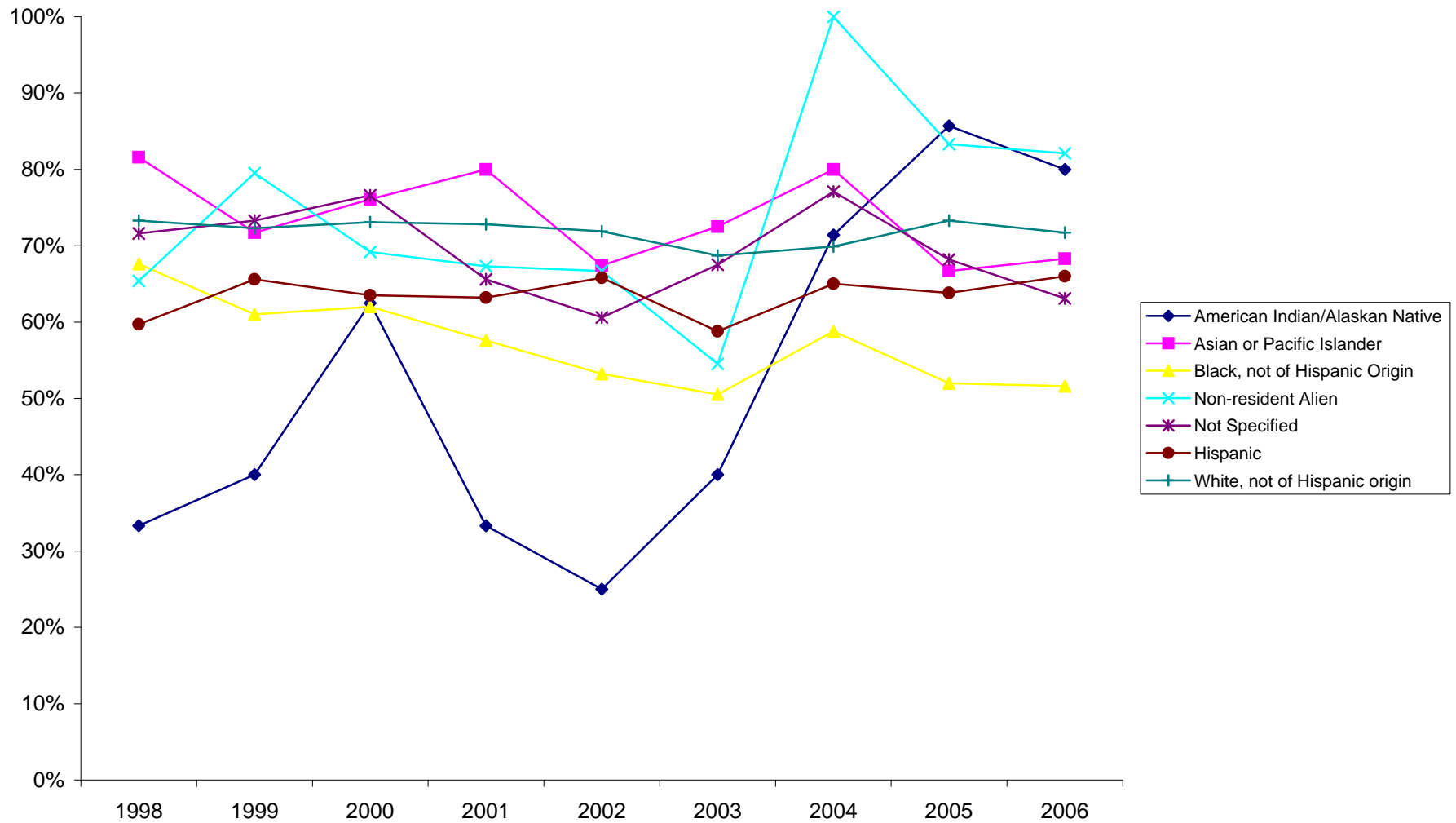
**First Fall Term**

**Initial Cohort Size**

**One-Year Return Rate**

**Graduated within:  
4 years 5 year Return Rate**

**University One-Year Return Rates for First-Time, Full-Time, Baccalaureate-Degree-Seeking Students  
by Ethnicity  
Fall Entry Cohorts 1998 - 2006**





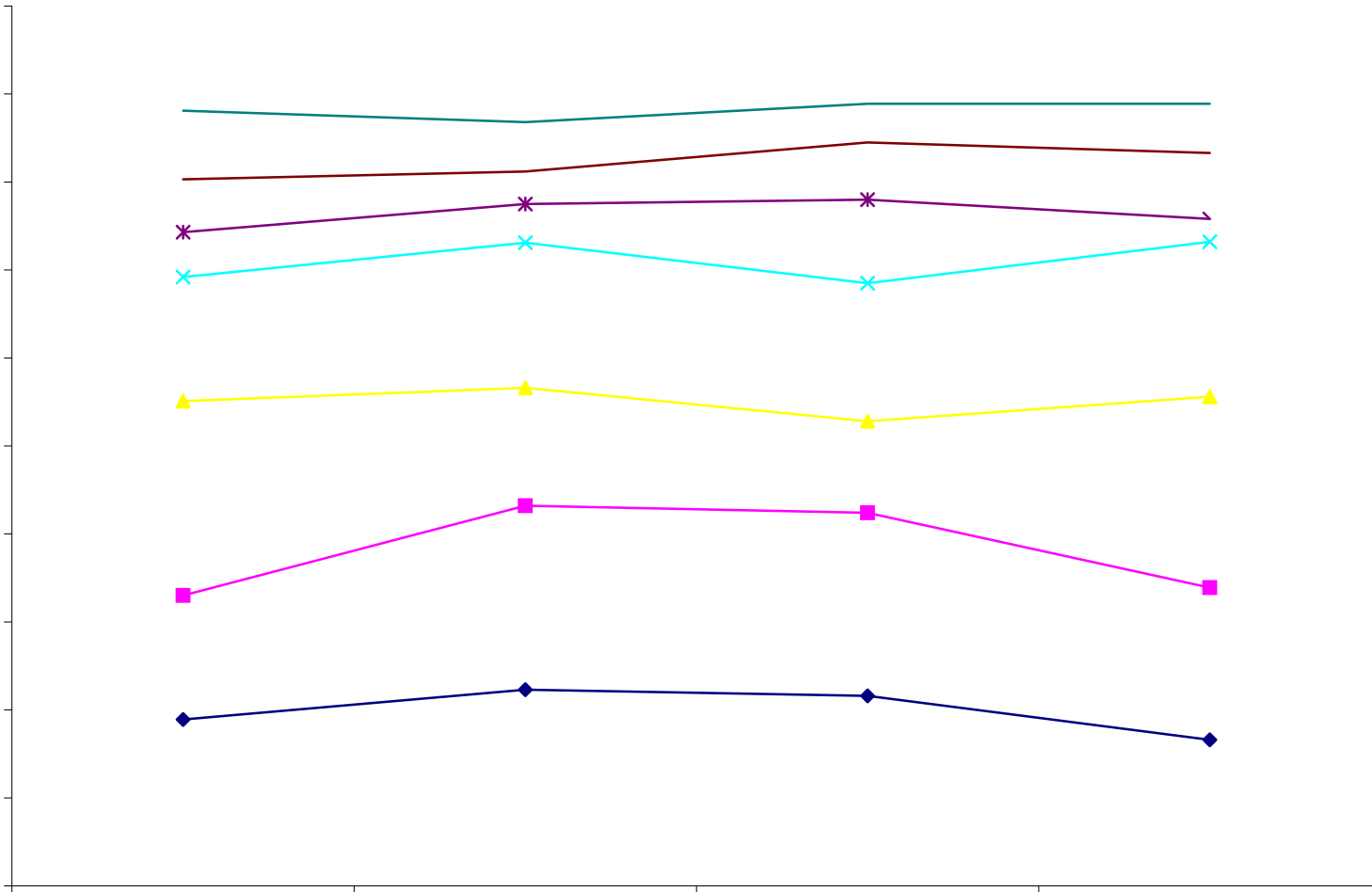
**University Return and Graduation Rates for First-Time, Full-Time,  
Baccalaureate-Degree-Seeking Students by Gender and Ethnicity  
Fall Entry Cohorts: 1998 - 2007**

**Male**

	Initial Cohort Size	One-Year Return Rate	Graduated within:		
			4 years	5 years	6 years
<b>American Indian/Alaskan Native</b>					
2007	5				
2006	4	100.0%			
2005	2	100.0%			
2004	3	100.0%			
2003	2	50.0%	0.0%		
2002	6	33.3%	0.0%	0.0%	
2001	4	50.0%	0.0%	0.0%	0.0%
2000	5	60.0%	0.0%	20.0%	20.0%
1999	5	40.0%	0.0%	0.0%	0.0%
	1	0.0%			

**University Return Rates for First-Time, Full-Time,  
Baccalaureate-Degree-Seeking Students by First Term GPA  
Fall Entry Cohorts: 1998 - 2006**

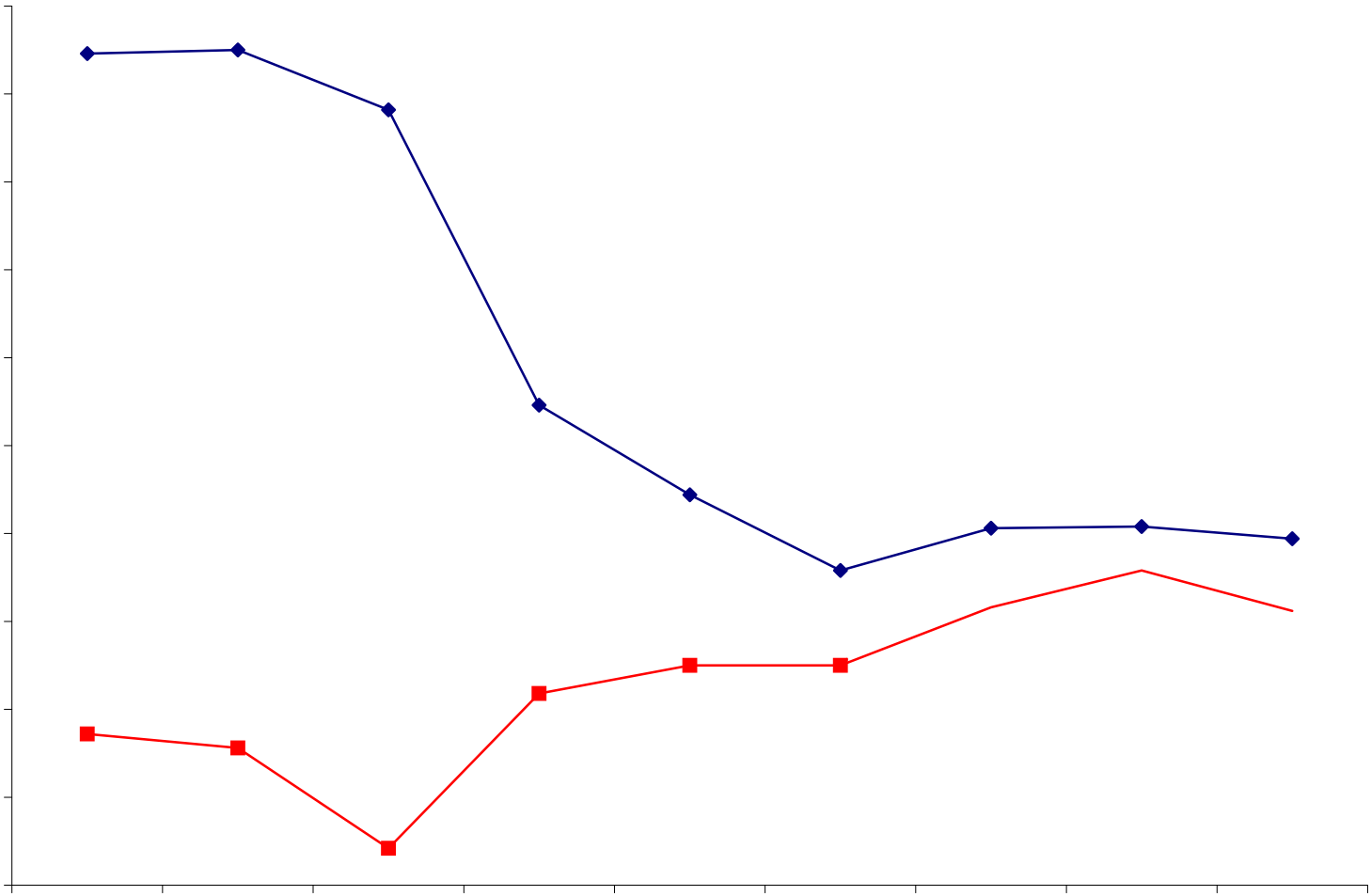
	<b>First Fall Term</b>	<b>Initial Cohort Size</b>	<b>One-Year Return Rate</b>
<b>&lt; 1.00</b>	<b>2006</b>	332	16.6%
	<b>2005</b>	278	21.6%
	<b>2004</b>	287	22.3%
	<b>2003</b>	307	18.9%
<b>1.00 - 1.50</b>	<b>2006</b>	165	33.9%
	<b>2005</b>	170	42.4%
	<b>2004</b>	162	43.2%
	<b>2003</b>	203	33.0%
<b>1.51 - 2.00</b>	<b>2006</b>	252	55.6%
	<b>2005</b>	252	52.8%
	<b>2004</b>	265	56.6%
	<b>2003</b>	336	55.1%
<b>2.01 - 2.50</b>	<b>2006</b>	377	73.2%
	<b>2005</b>	365	68.5%
	<b>2004</b>	376	73.1%
	<b>2003</b>	422	69.2%





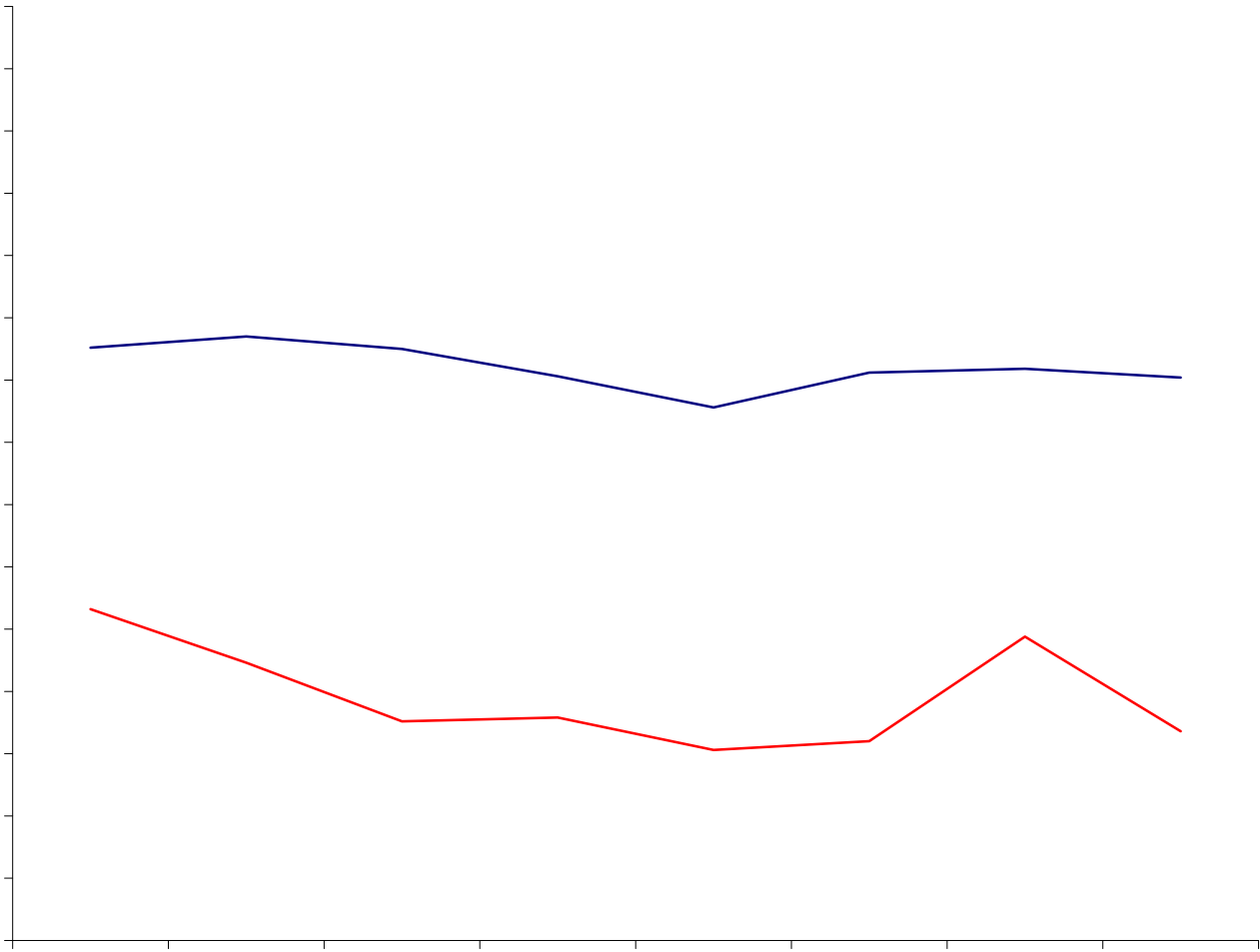
**University Return and Graduation Rates for First-Time, Full-Time,  
Baccalaureate-Degree-Seeking Students by Campus Residency  
Fall Entry Cohorts: 1998 - 2007**

First Fall Term	Initial Cohort Size	One-Year Return Rate	Graduated within:		
			4 years	5 years	6 years
<b>On Campus 2007</b>	2,438				
<b>2006</b>	2,109	69.7%			
<b>2005</b>	2,188	70.4%			
<b>2004</b>	1,999	70.3%			
<b>2003</b>	2,187	67.9%	24.8%		
<b>2002</b>	2,285	72.2%	26.7%	48.0%	
<b>2001</b>	1,876	77.3%	25.3%	48.1%	51.8%
<b>2000</b>	1,513	94.1%	31.8%	60.1%	65.4%
	936	97.5%	31.0%	70.6%	76.8%



**University Return and Graduation Rates for First-Time, Full-Time,  
Baccalaureate-Degree-Seeking Students by Enrollment Action  
Fall Entry Cohorts: 1998 - 2007**

	First Fall Term	Initial Cohort Size	One-Year Return Rate	Graduated within:		
				4 years	5 years	6 years
<b>New Direct from High School</b>	<b>2007</b>	3,401				
	<b>2006</b>	2,936	70.2%			
	<b>2005</b>	2,918	70.9%			
	<b>2004</b>	2,767	70.6%			
	<b>2003</b>	3,076	67.8%	23.7%		
	<b>2002</b>	3,360	70.3%	23.6%	44.1%	
	<b>2001</b>	3,036	72.5%	22.9%	42.6%	47.1%
	<b>2000</b>	3,014	73.5%	22.6%	42.9%	47.9%
	<b>1999</b>	2,616	72.6%	17.6%	40.2%	45.9%
	<b>New Adult</b>	<b>2007</b>	185			
<b>2006</b>		201	41.8%			
<b>2005</b>		170	49.4%			
<b>2004</b>		178	41.0%			
<b>2003</b>		206	40.3%	5.8%		
<b>2002</b>		205	42.9%	7.3%	15.6%	
<b>2001</b>		237	42.6%	4.6%	10.5%	12.2%
<b>2000</b>		203	47.3%	6.4%	13.3%	16.3%
<b>1999</b>		221	51.6%	5.4%	10.9%	13.6%



**University Return and Graduation Rates for First-Time, Full-Time,  
Baccalaureate-Degree-Seeking Students  
by Composite ACT Category  
Fall Entry Cohorts: 2001 - 2007**

ACT Range	Cohort Year	Count of Students	One-Year Return Rate	Graduated within		
				4 years	5 years	6 years
<b>18 and below</b>	2007	715				
	2006	626	55.1%			
	2005	622	55.8%			
	2004	683	61.1%			
	2003	704	54.3%	9.2%		
	2002	813	61.0%	11.6%	27.3%	
	2001	694	65.4%	9.9%	26.1%	31.7%
<b>18 and below Average</b>		<b>694</b>	<b>58.8%</b>	<b>10.2%</b>	<b>26.7%</b>	<b>31.7%</b>
<b>19 to 21</b>	2007	765				
	2006	655	68.5%			
	2005	632	67.7%			
	2004	670	67.5%			
	2003	728	63.7%	19.8%		
	2002	828	70.5%	22.7%	44.0%	
	2001	753	73.8%	19.9%	38.6%	45.0%
<b>19 to 21 Average</b>		<b>705</b>	<b>68.6%</b>	<b>20.8%</b>	<b>41.3%</b>	<b>45.0%</b>
<b>22 to 24</b>	2007	836				
	2006	741	74.0%			
	2005	733	75.3%			
	2004	612	72.2%			
	2003	750	72.7%	27.6%		
	2002	722	73.7%	26.9%	49.2%	
	2001	674	79.2%	30.9%	52.8%	56.4%
<b>22 to 24 Average</b>		<b>711</b>	<b>74.5%</b>	<b>28.4%</b>	<b>51.0%</b>	<b>56.4%</b>
<b>25 and above</b>	2007	886				
	2006	746	82.7%			
	2005	763	83.7%			
	2004	635	83.9%			
	2003	699	83.5%	41.5%		
	2002	776	80.3%	37.2%	62.8%	
	2001	631	87.6%	38.5%	65.9%	69.7%
<b>25 and above Average</b>		<b>716</b>	<b>83.6%</b>	<b>39.1%</b>	<b>64.3%</b>	<b>69.7%</b>
<b>No ACT Provided</b>	2007	385				
	2006	369	50.1%			
	2005	338	55.0%			
	2004	345	53.0%			
	2003	401	48.4%	9.0%		
	2002	426	50.5%	10.3%	20.4%	
	2001	521	39.3%	7.1%	14.0%	15.2%
<b>No ACT Provided Average</b>		<b>659</b>	<b>49.4%</b>	<b>8.8%</b>	<b>17.2%</b>	<b>15.2%</b>

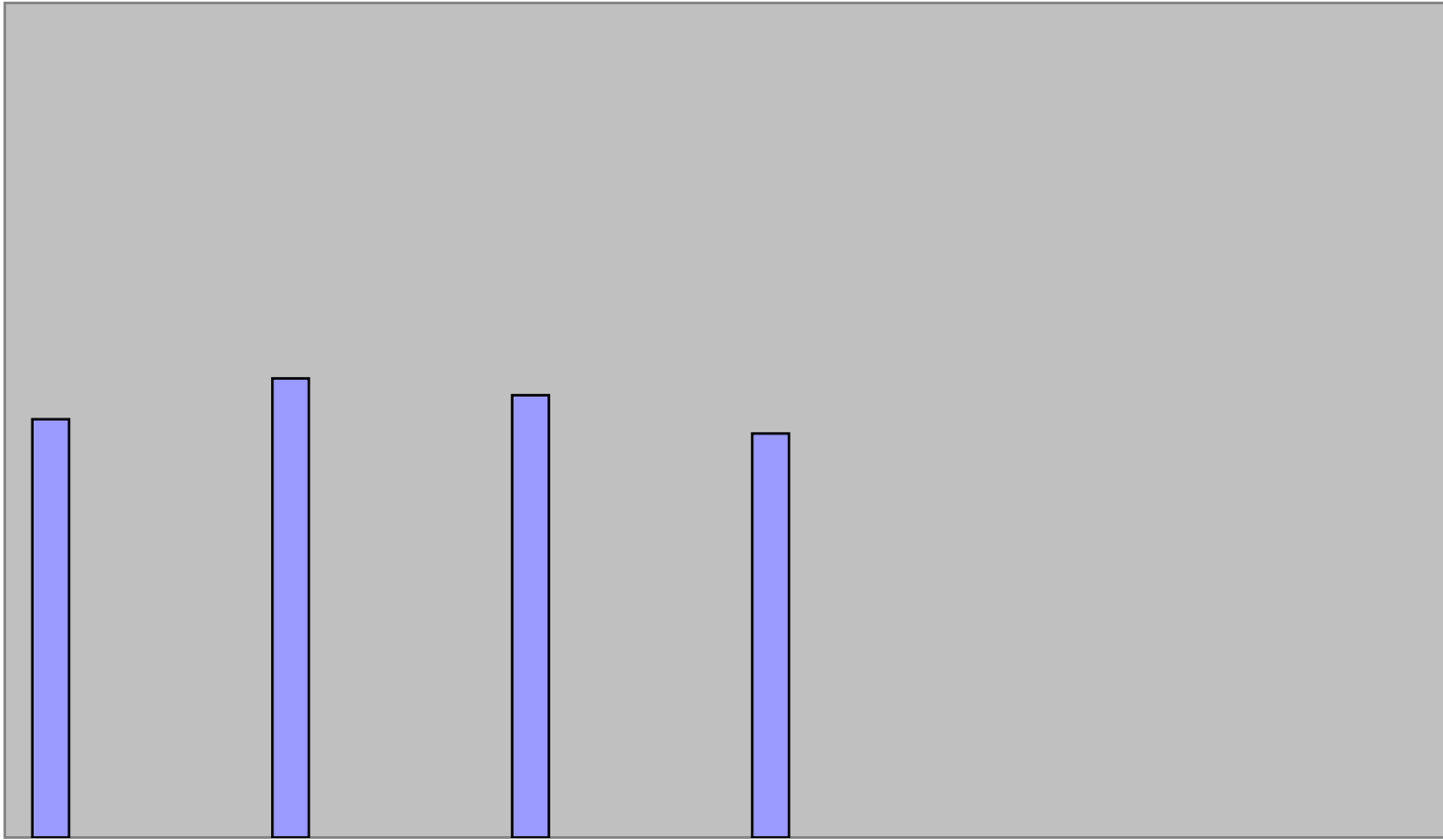
SOURCE: Institutional Analysis System (Fall 2003-07 data), Census Point Database (Fall 2001-03 data) and SIS data warehouse query run on 9/19/2007 (2001-03 ACT scores)

NOTES: (1) Based on recent changes to IPEDS definitions of First-Time, Full-Time, Baccalaureate-Degree-Seeking students, we have made retroactive adjustments to fall cohort sizes, retention rates, and graduation rates in this report.

(2) Graduation rates are cumulative.

(3) Return and graduation rates for students who began before Fall 2001 are unreliable because ACT scores are only available for students who have had enrollment activity since September 2001.

(4) A large percentage of students who do not have an ACT score on record are new adults or international students.



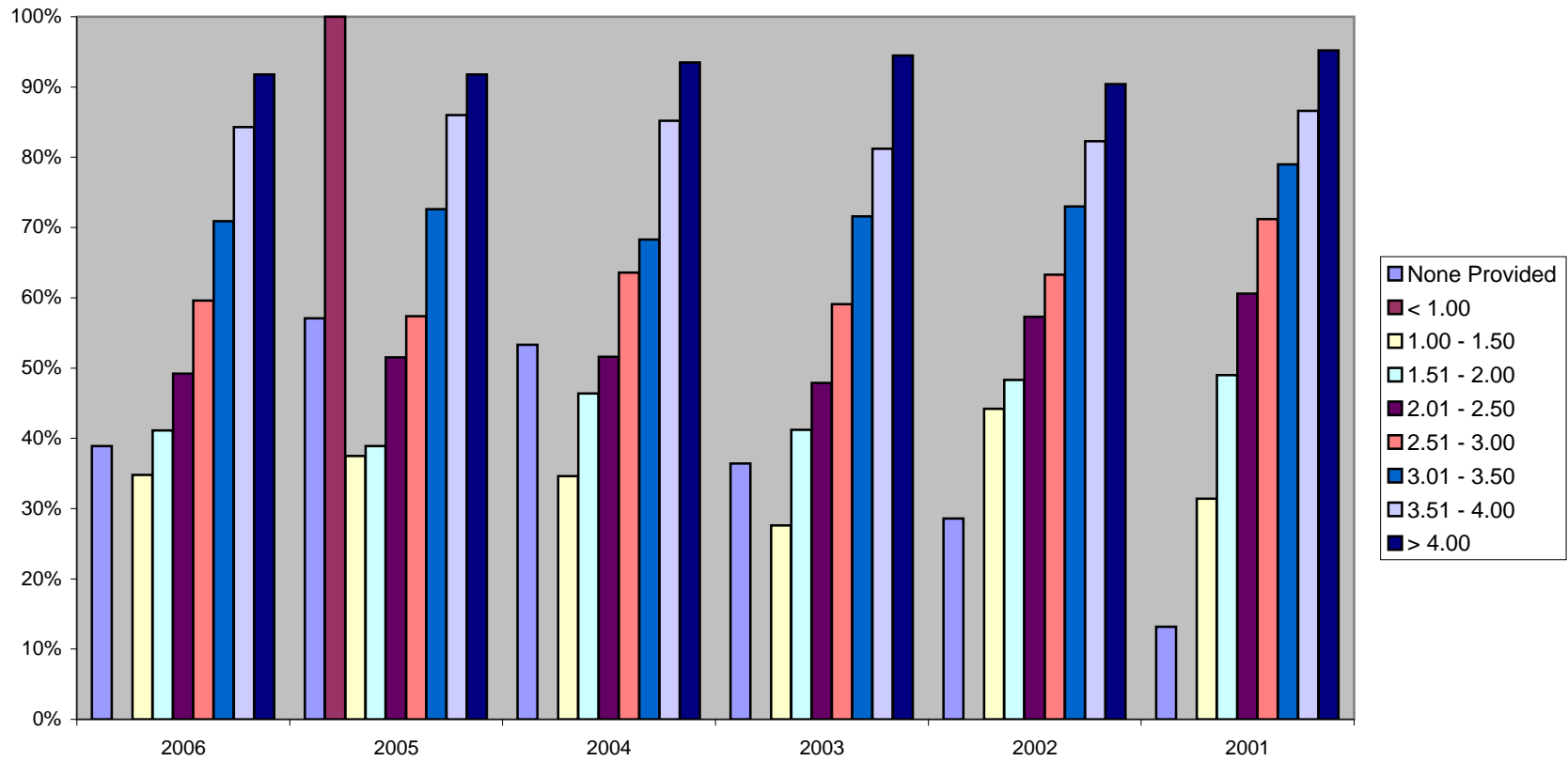
High School GPA	First Fall Term	Initial Cohort Size	One-Year Return Rate	4 years	5 years	6 years
None Provided	2007	37				
	2006	54	38.9%			
	2005	42	57.1%			
	2004	45	53.3%			
	2003	66	36.4%	9.1%		
	2002	63	28.6%	17.5%	20.6%	
	2001	212	13.2%	6.1%	9.0%	9.0%
<b>None Provided Average</b>		<b>74</b>	<b>37.9%</b>	<b>10.9%</b>	<b>14.8%</b>	<b>9.0%</b>
< 1.00	2007	0				
	2006	0	na			
	2005	1	100.0%			
	2004	1	0.0%			
	2003	1	0.0%	0.0%		
	2002	1	0.0%	0.0%	0.0%	
	2001	0	na	na	na	na
<b>&lt; 1.00 Average</b>		<b>1</b>	<b>25.0%</b>	<b>0.0%</b>	<b>0.0%</b>	<b>na</b>
1.00 - 1.50	2007	28				
	2006	23	34.8%			
	2005	24	37.5%			
	2004	26	34.6%			
	2003	29	27.6%	3.4%		
	2002	43	44.2%	2.3%	2.3%	
	2001	35	31.4%	0.0%	2.9%	5.7%
<b>1.00 - 1.50 Average</b>		<b>30</b>	<b>35.0%</b>	<b>1.9%</b>	<b>2.6%</b>	<b>5.7%</b>
1.51 - 2.00	2007	194				
	2006	141	41.1%			
	2005	131	38.9%			
	2004	168	46.4%			
	2003	182	41.2%	1.6%		
	2002	236	48.3%	3.4%	10.2%	
	2001	204	49.0%	4.4%	9.8%	15.2%
<b>1.51 - 2.00 Average</b>		<b>179</b>	<b>44.2%</b>	<b>3.1%</b>	<b>10.0%</b>	<b>15.2%</b>
2.01 - 2.50	2007	451				
	2006	459	49.2%			
	2005	452	51.5%			
	2004	444	51.6%			
	2003	503	47.9%	4.6%		
	2002	590	57.3%	8.3%	22.5%	
	2001	508	60.6%	5.3%	18.1%	22.2%
<b>2.01 - 2.50 Average</b>		<b>487</b>	<b>53.0%</b>	<b>6.1%</b>	<b>20.3%</b>	<b>22.2%</b>
2.51 - 3.00	2007	743				
	2006	592	59.6%			
	2005	585	57.4%			
	2004	629	63.6%			
	2003	724	59.1%	14.4%		
	2002	736	63.3%	13.6%	31.4%	
	2001	631	71.2%	15.1%	32.8%	38.2%
<b>2.51 - 3.00 Average</b>		<b>663</b>	<b>62.4%</b>	<b>14.3%</b>	<b>32.1%</b>	<b>38.2%</b>
3.01 - 3.50	2007	947				
	2006	838	70.9%			
	2005	803	72.6%			
	2004	710	68.3%			
	2003	797	71.6%	23.6%		
	2002	862	73.0%	26.1%	46.8%	
	2001	824	79.0%	24.8%	47.0%	51.6%
<b>3.01 - 3.50 Average</b>		<b>826</b>	<b>72.6%</b>	<b>24.8%</b>	<b>46.9%</b>	<b>51.6%</b>
3.51 - 4.00	2007	916				
	2006	823	84.3%			
	2005	843	86.0%			
	2004	722	85.2%			
	2003	780	81.2%	39.7%		
	2002	847	82.3%	39.1%	66.0%	
	2001	733	86.6%	40.4%	66.2%	70.1%
<b>3.51 - 4.00 Average</b>		<b>809</b>	<b>84.3%</b>	<b>39.7%</b>	<b>66.1%</b>	<b>70.1%</b>
> 4.00	2007	270				
	2006	207	91.8%			
	2005	207	91.8%			
	2004	200	93.5%			
	2003	200	94.5%	53.5%		
	2002	187	90.4%	44.9%	80.7%	
	2001	126	95.2%	50.0%	84.1%	89.7%
<b>&gt; 4.00 Average</b>		<b>200</b>	<b>92.9%</b>	<b>49.5%</b>	<b>82.4%</b>	<b>89.7%</b>

SOURCE: Institutional Analysis System (Fall 2003-07 data), Census Point Database (Fall 2001-03 data) and SIS data warehouse query run on 9/25/07 (2001-03 GPAs).

NOTES: (1) Based on recent changes to IPEDS definitions of First-Time, Full-Time, Baccalaureate-Degree-Seeking students, we have made retroactive adjustments to fall cohort sizes, retention rates, and graduation rates in this report.

(2) Graduation rates are cumulative.

### One-Year Return Rates by High School GPA Category



Note: Return rates for students who began prior to Fall 2001 are unreliable because high school GPAs are only available for students who have had enrollment activity since September 2001.



# **Degrees Awarded**

De ee e e e De ee e e e  
e

D	









+), \*)# '1 2%\*3)3'45'0 /&&), )6' - %./ \*6'%73'+), \*) )'859):!' "#\$%&' ( )%\*#'; <<=>; <<?

0 /&&), )

- %./ \*

+), \*)

!"#\$%&' ( )%\*

; <<? ; <<@ ; <<A ; <<B ; <<=

1 \*C#'D'E\$")7\$)#

'8 /C%&

?KL ?@= ?== ?B@ @;L

MN#'7)##

'8 /C%&

?;0 ?@; ?=<

+), \*)#12%\*3)3'45'0/;&&), )6' - %./ \*6'%73'+), \*) )'859):!'!#\$%&' ( )%\*#';<<=>;<<?

0/;&&), )

-%./ \*

+), \*)

!#\$%&' ( )%\*

; <<? ; <<@ ; <<A ; <<B ; <<=

I3N\$%C"/7



+), \*)#12%\*3)3'45'0/%%), )6' - %./ \*6'%73'+), \*) )'859):!'!#\$%&' ( )%\*#';<<=>;<<?

0/%%), )

-%./\*

+), \*)

!#\$%&' ( )%\*

;<<? ;<<@ ;<<A ;<<B ;<<=

I3N\$%C"/7

+), \*)#12%\*3)3'45'0/%%), )6' - %./ \*6'%73'+), \*) )'859):!'!#\$%&' ( )%\*#';<<=>;<<?

0/%%), )

-%./ \*

+), \*)

!#\$%&' ( )%\*

;<<? ;<<@ ;<<A ;<<B ;<<=

17, "7)")\*7,

+), \*)# '1 2%\*3)3'45'0/ &&), )6' - %./ \*6'%73'+), \*) )'859):! "#\$%&' ( )%\*#'; <<=>; <<?

0/ &&), )

- %./ \*

+), \*) )

! "#\$%&' ( )%\*

---

; <<?

+), \*) )# '1 2%\*3) 3'45'0 / &&), ) 6' - %./ \*6'%73'+), \*) )'859):! "#\$%&' ( )%\*#' ; <<=> ; <<?

0 / &&), )

- %./ \*

+), \*) )

! "#\$%&' ( )%\*

; <<? ; <<@ ; <<A ; <<B ; <<=

T%2

'8 / C%&&

LBK L=0 LAL L;L L<?

JN\*#"7,

'8 / C%&&

L;A < < < <

UQ%\*R%\$5

'8 / C%&&

;AA ;B? ;LA ;=< L?B

G7"S)\*#"C5'0 / &&), )

+), \*)#12%\*3)3'45'0/%%), )6' - %./ \*6'%73'+), \*) )'859):!'#\$%&' ( )%\*#';<<=>;<<?

0/%%), )

-%./\*

+) , \*)

!"#\$%&' ( )%\*

; <<? ; <<@ ; <<A ; <<B ; <<=

G7"S)\*#"C5'0/%%), )

'8/C%&

; ?K ; AK ; @B ; OL ; ?A

!"#\$%&' ( )%\*8/C%&

=&KA< =&K?=& =&K?A =&KL< =&BK?

JF81E:

EFGH01:

# **Faculty & Staff**

**Fall 2007**  
**FTE Faculty and Headcount**  
*\*as of 11/1/2007*

### **FTE Faculty by Report Rank**

<b>Banner Rank Code</b>	<b>FTE Total</b>	<b>Count</b>
Deans Office	24.00	24
Professor	222.30	223
Associate	223.00	223
Assistant	158.00	158
Instructor	9.00	9
Visiting Prof	81.00	81
Lecturer	103.00	103
Emerti	1.83	5
Part-time	219.00	395
<b>Grand Total</b>	<b>1029.99</b>	<b>1204</b>

\*Banner System ODS Tables 11/1/2007

***NOT** included in this table are the Faculty from the Offices of the President and Provost*

**Fall 2007**

FTE Faculty and Headcount

\*as of 11/1/2007

**FTE Faculty by College by Report Rank**

COLLEGE	RANK	FTE	COUNT
<i>Arts &amp; Science</i>	<i>Administration</i>	6.00	6
	<i>Professor</i>	99.50	100
	<i>Associate</i>	99.00	99
	<i>Assistant</i>	65.00	65
	<i>Instructor</i>	60.00	60

00)670et1 i 6020804e W20 0 128 6 llef18 syl681 F130133 Assistant 1 1 Lecture08104f18 syl605138133 Dss



**Fall 2007**

## FTE Faculty and Headcount

\*as of 11/1/2007

<i>Pharmacy</i>	<i>Administration</i>	3.00	3
	<i>Professor</i>	13.00	13
	<i>Associate</i>	9.00	9
	<i>Assistant</i>	9.00	9
	<i>Visiting Instr</i>	4.00	4
	<i>Lecture</i>	2.00	2
	<i>Part-time</i>	1.53	7
	<b>Pharmacy Total</b>	<b>41.53</b>	<b>47</b>
<i>Heath &amp; Human Services</i>	<i>Administration</i>	3.00	3
	<i>Professor</i>	15.00	15
	<i>Associate</i>	29.00	29
	<i>Assistant</i>	14.00	14
	<i>Visiting Instr</i>	8.00	8
	<i>Lecturer</i>	10.00	10
	<i>Emeriti</i>	0.33	1
	<i>Part-time</i>	83.47	73
	<b>Heath &amp; Human Services Total</b>	<b>162.80</b>	<b>153</b>
<i>University College</i>	<i>Associate</i>	2.00	2
	<i>Assistant</i>	2.00	2
	<i>Lecturer</i>	2.00	2
	<i>Emeriti</i>	0.67	1
	<i>Part-time</i>	5.91	14
	<b>University College Total</b>	<b>12.58</b>	<b>21</b>
<i>Library</i>	<i>Administration</i>	1.00	1
	<i>Professor</i>	1.00	1
	<i>Associate</i>	7.00	7
	<i>Assistant</i>	9.00	9
	<i>Visiting Instr</i>	3.00	3
	<i>Emeriti</i>	0.33	1
	<i>Part-time</i>	8.03	19
	<b>Library Total</b>	<b>29.36</b>	<b>41</b>
<i>Nursing</i>	<i>Visiting Instr</i>	1.00	1
	<i>Lecturer</i>	4.00	4
	<i>Part-time</i>	1.50	6
	<b>Nursing Total</b>	<b>6.50</b>	<b>11</b>
	<b>Grand Total</b>	<b>1,029.99</b>	<b>1,204</b>

\*Banner System ODS Tables 11/1/2007

*NOT included in this table are the Faculty from the Offices of the President and Prov*

**University of Toledo**  
**Headcount of Faculty by Gender by Ethnicity**  
**Fall 2007**

<b>GENDER_DESC</b>	<b>ETHNCITY_CATEGORY</b>	<b>Full-time</b>	<b>Part-time</b>	<b>Grand Total</b>
Female	Am. Indian or Alaskan Native	2		2
	Asian or Pacific Islander	20	2	22
	Black Non-Hispanic	18	11	29
	Hispanic	4	5	9
	Other	3	4	7
	White Non-Hispanic	266	160	426
<b>Female Total</b>		<b>313</b>	<b>182</b>	<b>495</b>
Male	Am. Indian or Alaskan Native	5	2	7
	Asian or Pacific Islander	73	9	82
	Black Non-Hispanic	25	6	31
	Hispanic	12	3	15
	Other	3	4	7
	White Non-Hispanic	429	138	567
<b>Male Total</b>		<b>547</b>	<b>162</b>	<b>709</b>
<b>Grand Total</b>		<b>860</b>	<b>344</b>	<b>1,204</b>

Banner System ODS Tables as of 11/1/2007

*NOT included in this table are the Presidents' and Provosts' departments*

**Headcount of Staff by Gender by EE0 Skill Description  
Fall 2007**

<b>GENDER_DESC</b>	<b>EEO_SKILL_DESC</b>	<b>Full-time</b>	<b>Part-time</b>	<b>Grand Total</b>
Female	Clerical and Secretarial	230	33	263
	Executive/Admin and Managerial	109	1	110
	Faculty	1	1	2
	Other Professionals	279	14	293
	Service/Maintenance	87	6	93
	Skilled Crafts	3		3
	Technical and Paraprofessional	17	2	19
<b>Female Total</b>		<b>726</b>	<b>57</b>	<b>783</b>
Male	Clerical and Secretarial	9		9
	Executive/Admin and Managerial	72	1	73
	Faculty	2	2	4
	Other Professionals	205	6	211
	Service/Maintenance	62	10	72
	Skilled Crafts	70		70
	Technical and Paraprofessional	47		47
<b>Male Total</b>		<b>467</b>	<b>19</b>	<b>486</b>
<b>Grand Total</b>		<b>1,193</b>	<b>76</b>	<b>1,269</b>

Banner System ODS Tables as of 11/1/2007